



# ***Nikon***

COOLPIX 900 Companion Software

## **Nikon View 900** for Windows

**Reference Manual**

## **Contents**

### **Overview**

#### **Before You Begin**

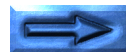
- System Requirements
- Installation

#### **Getting Started**

- First Steps
- Port and Removable Drive Settings
- Cleaning Up the Temporary Folder
- Notes on Using the Camera as a Drive

#### **Working with Images**

- Browsing Images
- Browsing Compact Flash-Memory Cards
- Browsing Images on Disk
- Viewing Images
- Rotating Thumbnails
- Deleting Images
- Printing Images
- Refreshing Thumbnails
- Viewing Image Information
- Copying Images to Disk
- Opening Images in Another Application
- Inserting Images into Documents



# Nikon View 900 Reference

## The Nikon CoolPix900 Window Image Windows

### Trademark Information

IBM and IBM PC/AT are registered trademarks of International Business Machines Corporation.

Windows and Windows NT are registered trademarks of Microsoft corporation. Internet Explorer is a product of Microsoft corporation.

i486 and Pentium are trademarks of Intel Corporation.

Adobe is a registered trademark, and PhotoDeluxe and Photoshop are trademarks, of Adobe Systems Inc.

Internet is a trademark of Digital Equipment Corporation.

Netscape and Netscape Navigator are registered trademarks of Netscape Communications Corporation.

CompactFlash is a trademark of SanDisk Corporation.

All other brand or product names mentioned in this manual are the trademarks or registered trademarks of their respective holders.

### Cautions

- The reproduction of this manual in whole or in part is prohibited save where Nikon's prior permission has been obtained.
- The information contained in this manual is subject to change without notice.
- Nikon has made every effort to produce a perfect manual, but should you find any mistakes, we would be grateful if you would kindly let us know. The address of the Nikon representative in your area is provided separately.
- Nikon is not liable for damages resulting from the use of this product.



### **Warning!**

The CD-ROMs on which the software and manuals are distributed should not be played back on audio CD equipment. Playing CD-ROMs on an audio CD player could cause hearing loss or damage the equipment.

## **Notice concerning prohibition of copying or reproduction**

Note that simply being in possession of material which has been copied or reproduced by means of a digital camera may be punishable by law.

### **Items prohibited by law from being copied or reproduced**

Do not copy or reproduce paper money, coins, securities, government bonds, or local government bonds, even if such copies or reproductions are stamped “Sample.”

The copying or reproduction of paper money, coins, or securities which are circulated in a foreign country is prohibited.

The copying or reproduction of unused postage stamps or post cards issued by the government without obtaining approval from the government is prohibited.

The copying or reproduction of stamps issued by the government and certified documents stipulated by law is prohibited.

## **Cautions on certain copies and reproductions**

The government has issued cautions on copies or reproductions of securities issued by private companies (shares, bills, checks, gift certificates, etc.), commuter passes, or coupon tickets, except when a minimum of necessary copies are to be provided for business use by a company. Also, do not copy or reproduce passports issued by the government, licenses issued by public agencies and private groups, ID cards, and tickets, such as passes and meal coupons.

### **Comply with copyright notices**

The copying or reproduction of works such as books, music, paintings, woodcut prints, maps, drawings, movies, and photographs which are copyrighted creative works is prohibited except when it is done for personal use at home or for similar restricted and non-commercial use.

Welcome to **Nikon View 900 for Windows**, a companion program for the COOLPIX 900. The **Nikon View 900** camera driver and browser allows rapid, easy access to camera image files when the camera is connected to a computer. With **Nikon View 900**, the camera functions as one of your computer's drives, making it possible to apply standard Windows operations to the image files in the camera's memory. Once you have installed **Nikon View 900** and mastered its simple operations, you'll be able to distribute your digital photographs by disk or electronic mail, or include them in your home page and other documents you create for business or personal use.

**Nikon View 900's** principle features are listed below.

- a camera driver for the COOLPIX 900, which allows you to connect your camera to a computer and access its memory in much the same way as you would an ordinary disk drive
- a browser function that makes it possible to preview at a glance all the images stored in your camera's memory, and to select items for editing, deletion, or transfer to disk
- support of OLE 2.0 Drag-and-Drop, making it easy to copy images to disk, open them in other applications, or insert them in documents
- simple operation featuring one-touch tool-bars and menus

- images can be opened in any application that supports JPEG for retouching or to be saved in another format, allowing you to use images as wallpaper for your desktop or distribute them by electronic mail
- if you have a compact flash-memory reader or a PCMCIA card slot and card adapter, the COOLPIX 900's compact flash-memory cards can be browsed even when not inserted in the camera



This manual will guide you, step-by-step, through the process of setting up and using **Nikon View 900** with your COOLPIX 900. The contents of each chapter are outlined below.

## Overview

Describes **Nikon View 900**'s features and outlines the contents of this manual

## Before You Begin

Explains how to install **Nikon View 900** on your computer

## Getting Started

A tutorial introduction to **Nikon View 900**

## Working with Images

Details the process of browsing images, opening them in other applications, and saving them to disk

## Nikon View 900 Reference

A handy reference guide to **Nikon View 900**'s main windows and menus

**Note:** *The illustrations and explanations in this manual are for Windows 95. Display and operation may differ under Windows NT 4.0, Windows 98, or when Active Desktop is used with Windows 95. Refer to the manuals provided with your operating system.*

## Before You Begin

This chapter gives the system requirements for *Nikon View 900 for Windows* and guides you through the process of installing *Nikon View 900* to your computer's hard disk.

**Note:** *This manual assumes a basic understanding of common Windows operations. If you are in doubt about the meaning of terms used here, refer to your Windows' manual.*

## System Requirements

*Nikon View 900 for Windows* is a 32-bit application. To run *Nikon View 900 for Windows*, you will need system hardware and software which meet the following minimum requirements:

- an IBM PC/AT or compatible computer with a i486, Pentium or later CPU
- Windows 95 or later, or Windows NT 4.0
- at least 8 MBs of free RAM (12 MBs or more is recommended)
- 2.5 MBs of free space on your hard-disk for installation (of which at least 1.5 MBs of which must be available in the Windows folder), with another 20 MBs of free hard disk space available for temporary storage while *Nikon View 900* is running
- a monitor with a resolution of 640 × 480 dots or higher and a video system which supports 8-bit color, or 256 colors (16-bit color or 24-bit color is recommended)
- a CD-ROM drive for installation
- a serial port for connection to the COOLPIX 900

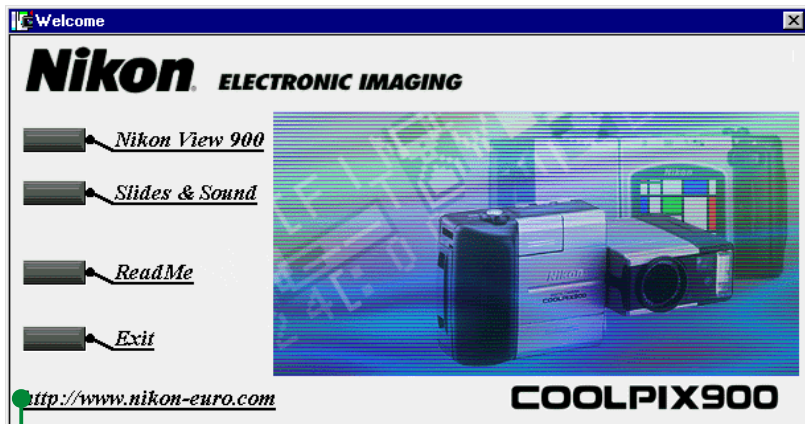
**Note:** *The “Windows folder” is the folder to which Windows has been installed.*

## Installation

The installation disk provided with this product contains the **Nikon View 900** browser software and drivers which handle the exchange of information between your computer and the COOLPIX 900. Before starting the installation program, exit any programs that may be running and check that you have enough space on your hard disk to install and run the program (a minimum of 22.5 MBs of free disk space is required, of which 1.5 MBs must be available in the Windows folder; more space will be needed should you choose to install the applications bundled with **Nikon View 900**). Do not connect the camera to the computer at this time.

### Step 1 — Insert the Nikon View 900 CD in the CD-ROM drive

When the **Nikon View 900** CD-ROM is inserted in the CD-ROM drive, the Welcome dialog box will appear on the desktop.

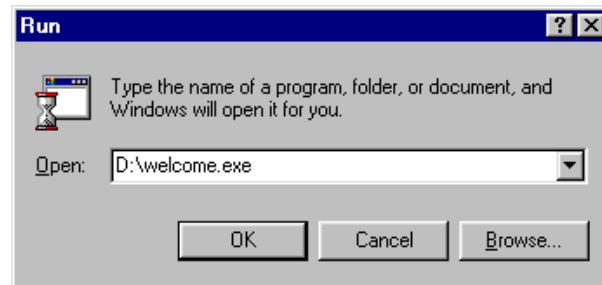


Click URL to go to user support page

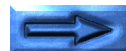
If you have a connection to the Internet, clicking the URL at the bottom of the Welcome dialog will start your Web browser and take you to the user support page for your region. One of **Netscape Navigator 3.0** or later or **Internet Explorer 3.0** or later is required.

### If the Welcome dialog does not appear...

If the CD-ROM Autorun option is off, the Welcome dialog will not appear automatically when the disk is inserted in the drive. If the Welcome dialog does not appear, choose **Run...** from the Windows **Start** menu. Enter the drive letter of the CD-ROM drive (drive "D:" in the example below) followed by "welcome.exe", then click **OK**.



The installer will start and the Welcome dialog will appear on the desktop.



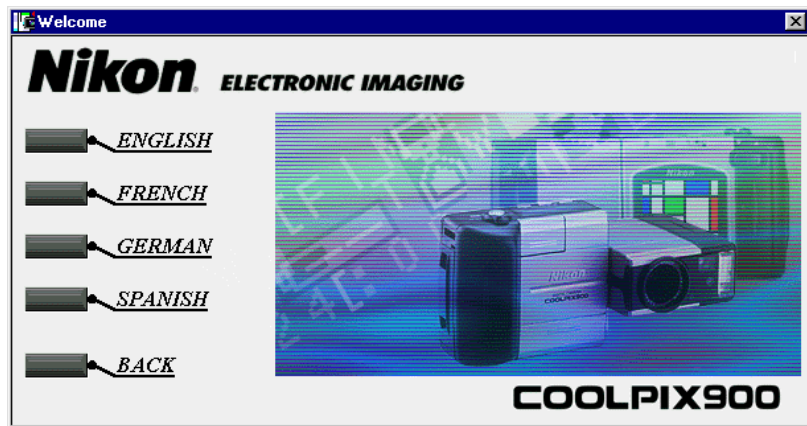
## Step 2 — View the README file

It is recommended that you take a few moments to view the README file, which contains important information about the software provided with your camera. Click **ReadMe** to open the README file in the **Notepad** application, where the contents of the file can be viewed or printed. When you have finished, select **Exit** from the **Notepad File** menu to return to the Welcome dialog box.

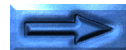
**Note:** A README file will be copied to the folder you chose as the destination for Nikon View 900. This file may be different from the README file accessed by clicking **ReadMe** in the Welcome window.

## Step 3 — Install Nikon View 900

To install **Nikon View 900**, click the **Nikon View 900** button. The dialog box shown on the previous page will be replaced a dialog offering a choice of language for **Nikon View 900**'s menus and dialogs. Select a language by clicking the appropriate button (please note that the menus and dialogs shown in this manual are for the English version).

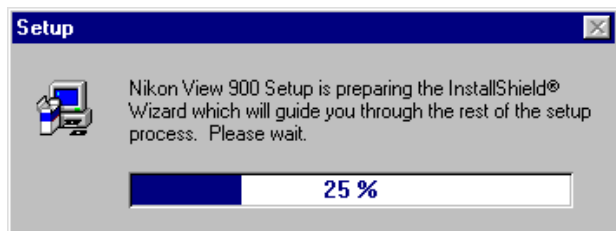


**Note:** The CD packaged with cameras sold in the U.S.A. does not include the French and German versions of Nikon View 900.

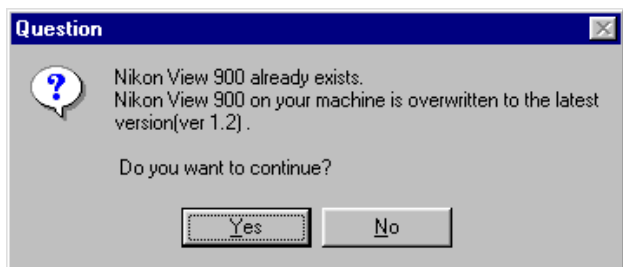




A progress indicator will be displayed while the setup program loads.



If you have already installed an earlier version of **Nikon View 900**, you will be asked whether you wish to replace the existing version.



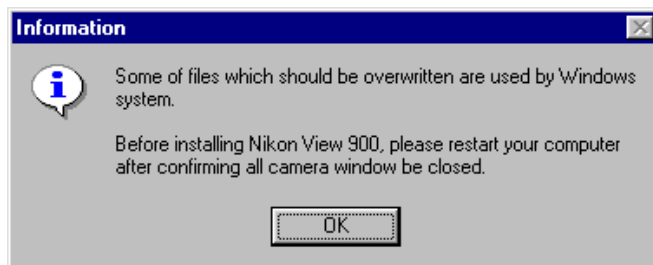
### **Yes**

Proceed with installation, replacing the existing version.

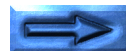
### **No**

End installation, leaving the existing version intact.

If you were using an earlier version of **Nikon View 900** or **FotoExplorer/FotoNation Explorer** (a program similar to **Nikon View** and included with some other digital cameras) prior to beginning installation, the following message will appear:



Clicking **OK** interrupts installation, after which you should restart your computer. If **Nikon View 900** or **FotoExplorer/FotoNation Explorer** are running, be sure to close all associated windows before restart. After restarting your computer, begin installation from Step 1.



Once the setup program has loaded, the following dialog will appear:



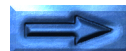
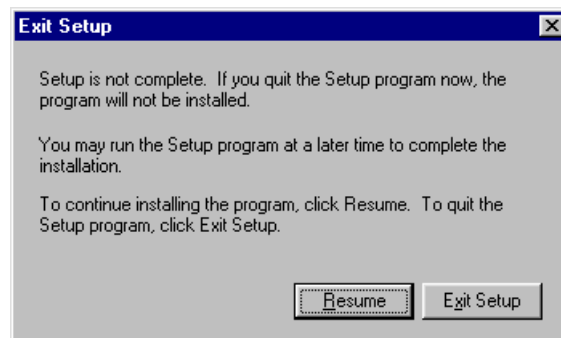
The buttons available in the Welcome dialog box are explained below.

### Next

Opens the Software License Agreement dialog box shown in Step 4.

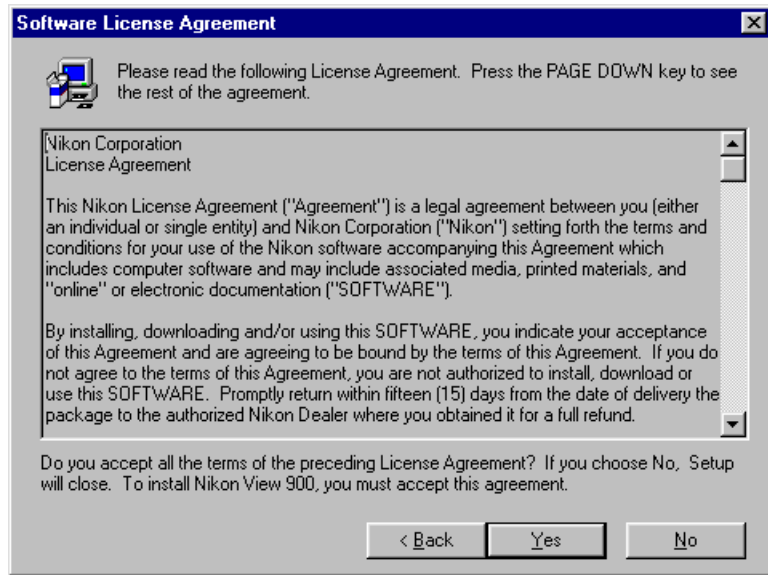
### Cancel

Clicking **Cancel** brings up the dialog box shown below. Click **Exit Setup** to quit without installing *Nikon View 900*, or **Resume** to continue installation. Should you choose to exit the setup program, you will still be able to complete installation at any time by repeating the process from Step 1.



## Step 4 — Accept the license agreement

Clicking **N**ext in the Welcome dialog box in Step 3 brings up the Software License Agreement dialog box.



The options in this dialog box are explained below.

### **Back**

Returns you to the Welcome dialog box shown in Step 3.

### **Yes**

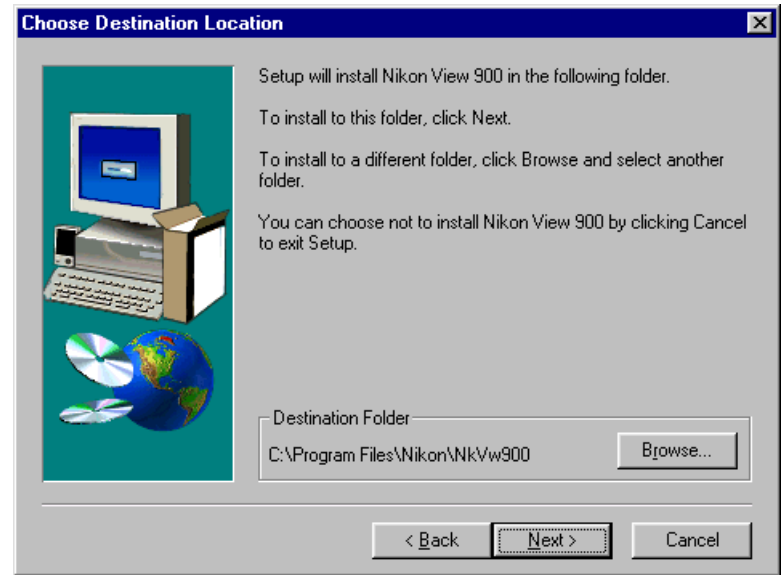
If, after reading the license agreement thoroughly, you accept its contents, click this button.

### **No**

Brings up the dialog box shown under **C**ancel in Step 3, allowing you to exit the setup program without installing **Nikon View 900**. You can run the setup program again at any time to complete installation.

## Step 5 — Select a destination folder for Nikon View 900

Clicking **Y**es in the Software License Agreement dialog box in Step 4 brings up the Choose Destination Location dialog box.

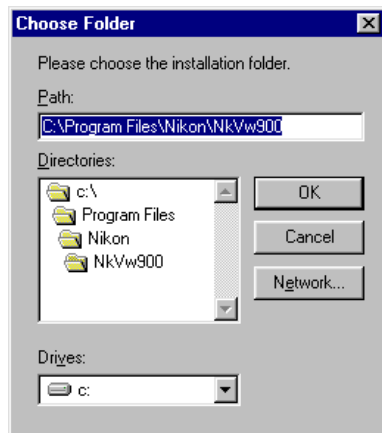


The options in this dialog box are explained below.



## Browse...

Clicking **Browse...** brings up the dialog box shown at right. You can type a destination folder for *Nikon View 900* in the **Path** text box, or click the folders shown under **Directories** to navigate to an existing folder on the current drive. Clicking on the arrow next to **Drives** allows you to select a another drive from a drop-down list. Click **OK** when you have chosen a destination folder, or **Cancel** to accept the default folder displayed in the Choose Destination Location dialog box.



## Next

Installs *Nikon View 900* to the selected folder. If the specified folder does not already exist, it will be created automatically.

## Back

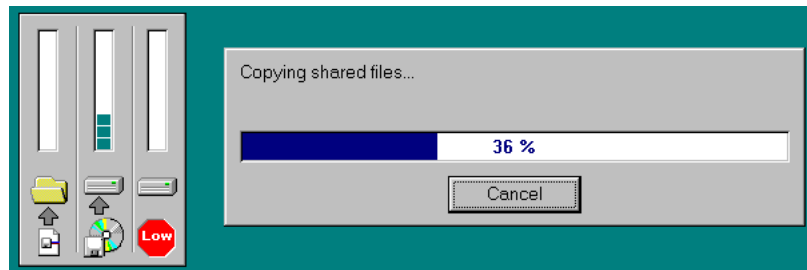
Returns you to the Software License Agreement dialog box shown in Step 4.

## Cancel

Clicking this button brings up the dialog box shown under **Cancel** in Step 3, allowing you to exit the setup program without installing *Nikon View 900*. You can run the setup program again at any time to complete installation.

## Step 6 — Complete installation

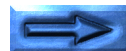
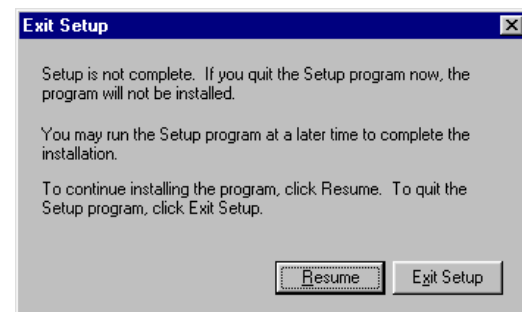
Clicking **Next** in the Choose Destination Location dialog box in Step 5 causes *Nikon View 900* to be installed in the specified folder. The following progress indicators will be displayed while *Nikon View 900*'s program files and drivers are being written to your hard disk.



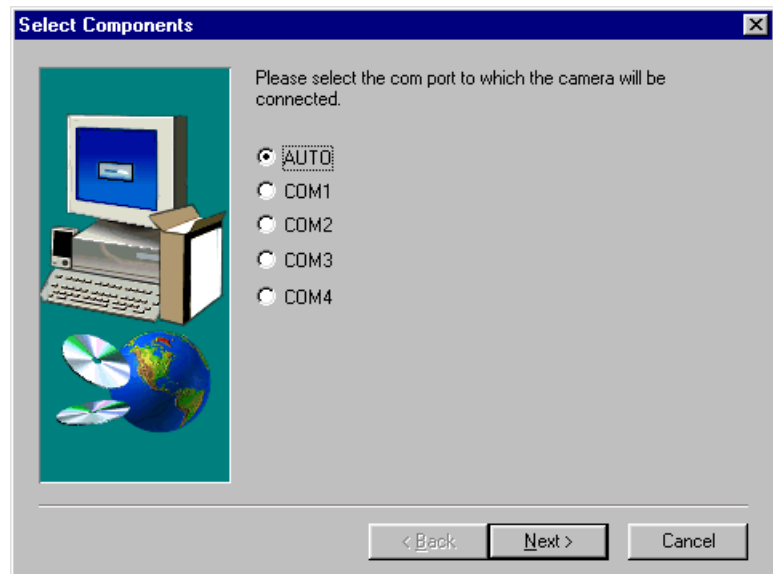
Clicking **Cancel** interrupts the installation and brings up the dialog box shown at right.

Click **Resume** to continue the installation process from

the point it was interrupted. Click **Exit Setup** to cancel the installation and return to Windows without adding *Nikon View 900* to your system. You can begin the installation process again at any time by inserting the *Nikon View 900* CD-ROM into the CD-ROM drive.



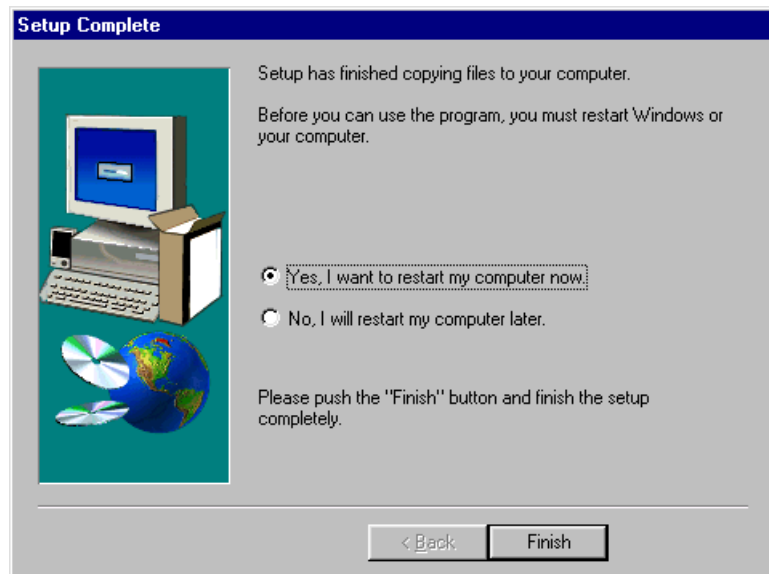
Once the installer has finished copying **Nikon View 900** to the destination folder, the following dialog box will be displayed.



Select the port to which you have connected or will connect your COOLPIX 900 from among **AUTO**, **COM1**, **COM2**, **COM3**, or **COM4**. Choose **AUTO** to have your computer automatically detect the port to which the camera is connected each time you connect to your camera. Port settings can be changed from **Nikon View 900**'s Preferences once installation is complete.

**Note:** *If you will be consistently connecting your camera to only one port, it is recommended that to speed processing you choose the appropriate port number instead of **AUTO**.*

After choosing a port, click **Next** to display the following dialog.



Click **Finish** to return to exit the setup program. If the “Yes, I want to restart my computer now” radio button is checked, the computer will restart when you exit the setup program. If “No, I will restart my computer later” is checked, you will return to Welcome dialog box in Step 1.

# Getting Started


Once you have installed the **Nikon View 900** software as described in “**Before You Begin**,” you are ready to use your computer to view the contents of your COOLPIX 900’s memory or to copy images to your computer for editing and storage. This chapter provides a brief introduction to **Nikon View 900**, and outlines the steps you will take when using the program with your COOLPIX 900. This chapter also explains other information you will need when using the program.

## First Steps

This section guides you step-by-step through the basics of using **Nikon View 900** to view images in your camera and copy them to disk. More detailed information can be found in the following chapter, “**Working with Images**.” An overview of the program’s windows and menus may be found in “**Nikon View 900 Reference**.”

### Step 1 — Connect the COOLPIX 900 to your computer

Connect the camera to your computer as described in the *COOLPIX 900 User’s Guide* or *Reference Manual*.

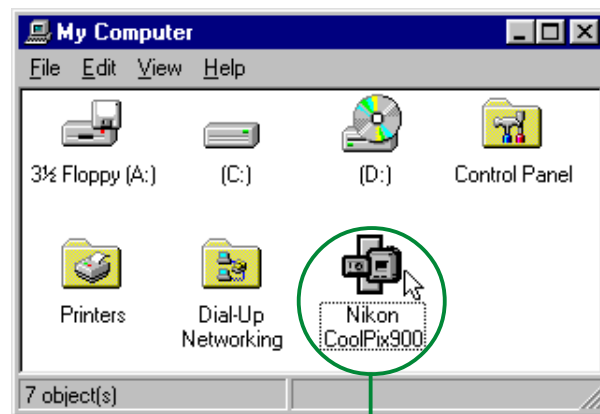
 **Caution:** When running the camera on battery power, check the battery level before connecting the camera. If the battery level is low or critical, replace the batteries or use the AC adapter (sold separately). If battery level falls to low or critical while the camera is connected, disconnect the camera and replace the batteries or connect the AC adapter. Operating the camera at low battery levels could result in communication problems.

### Step 2 — Browse the images in your camera

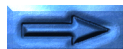
Double-click the **My Computer** icon on the Windows desktop.



The COOLPIX 900 will appear in the My Computer folder with the computer’s other drives as **Nikon CoolPix900**. Double-click the **Nikon CoolPix900** icon.



Double-click the **Nikon CoolPix900** icon



The data-transfer icon in the camera's control panel will flash, indicating that the computer has initiated communications with the camera.

**✓ Caution:** The data-transfer icon (↔) will continue to flash for up to sixty seconds after transfer of data is complete. Do not disconnect the camera while the icon is flashing.

The Nikon CoolPix900 window will be displayed as shown below. The images in the camera's memory will appear as thumbnail images.



If there are a large number of images stored in the camera's memory, it may not be possible to display them all at once. You can view hidden thumbnails by dragging the scroll sliders at the right and bottom of the window, or by clicking the scroll bars or arrow buttons. Alternatively, you can enlarge the window itself dragging the window's borders.

- Scroll slider
- Scroll bar
- Arrow button



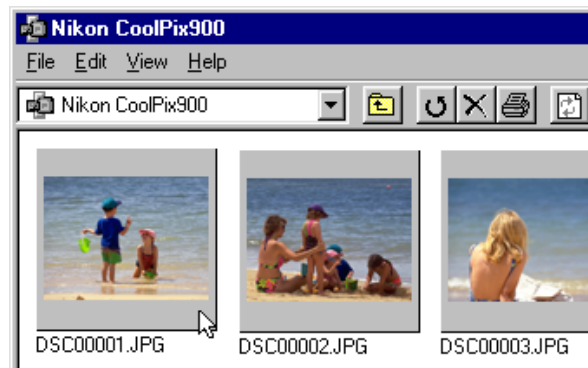
**Note:** If the computer is unable to establish connection with the camera, the following dialog will appear.



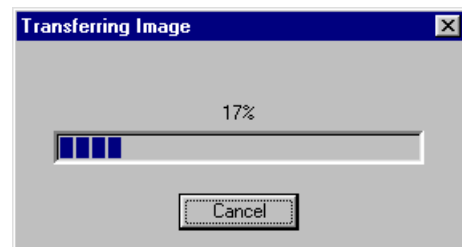
After clicking **OK** to close the dialog, check that the camera and computer are connected and that the camera's selector dial is not set to OFF. If the data transfer icon is not showing in the camera's control panel, check whether the serial cable is properly connected and that the batteries are properly inserted and are not dead. If you are using the AC adapter, be sure that it is properly connected. The above connection error will also appear if you specified the wrong port during installation. Choose a new port as instructed in the following section, "Port and Removable Drive Settings."

### Step 3 — View selected images

To view an image, double-click the associated thumbnail.



The following indicator will be displayed while image data are copied to the image window.





Once transfer is complete, the image will be displayed at full resolution in the image window.

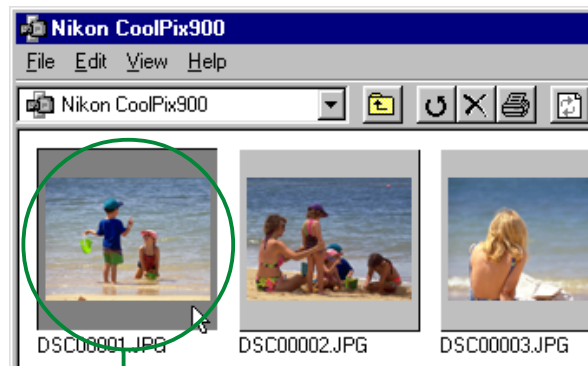


Clicking the close button (✕) at the right end of the title bar closes the image window.

**Note:** The default data-transfer rate is 115200bps. This setting may be too high for some i486 machines. If you experience communications problems, try setting the data-transfer rate to 19200bps as instructed in “Port and Removable Drive Settings” below.

## Step 4 — Select thumbnails

Before you can perform operations such as copy, print, or delete on images in the Nikon CoolPix900 window, you will need to select the associated thumbnail by clicking it once. Selected thumbnails are indicated by a dark gray border.



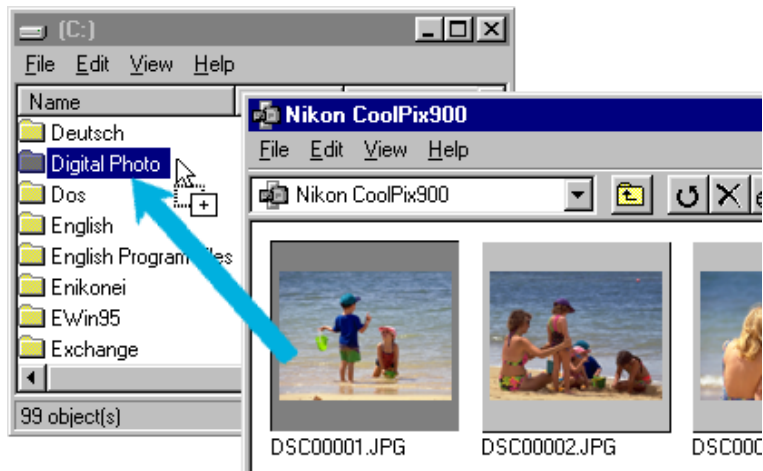
Selected image

To select multiple thumbnails, hold down the **Ctrl** key on the keyboard while clicking each image in turn.

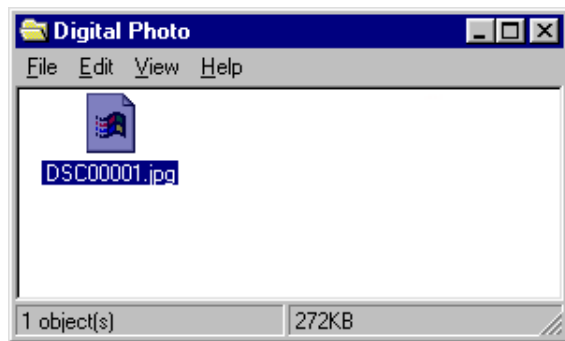


## Step 5 — Copy images to disk

Before copying images to disk, locate or create the destination folder. Images can be copied to disk by dragging selected thumbnails from the Nikon CoolPix900 window to the destination folder and releasing the mouse button (“drag and drop”).



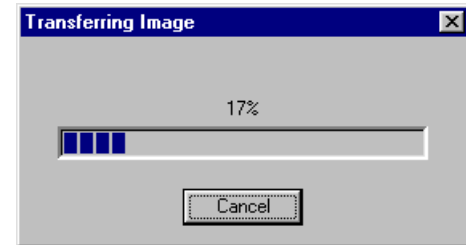
Once the image has been copied, a copy of the file will appear in the destination folder.



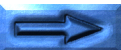
**Note:** *It is recommended that you change the filename of images after copying them to disk to make file management easier.*

### The progress indicator

The first time an image is opened or copied, the following progress indicator will appear.



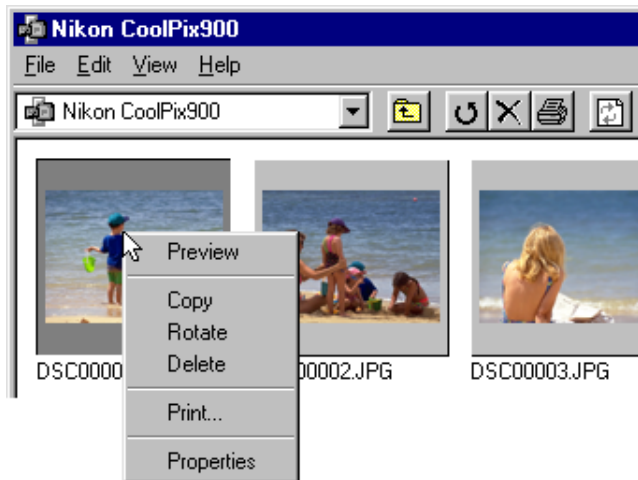
Click **Cancel** to abort the operation. If the image has already been copied to disk or opened in an image window or other application, the copy stored in the temporary folder (see “*Cleaning Up the Temporary Folder*,” below) will be used and the progress indicator will not appear.



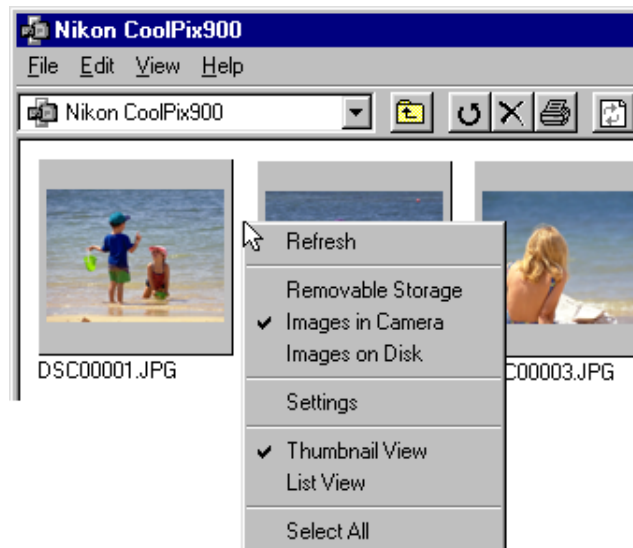
## Tips for working with thumbnails

### Using the right-button menu

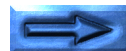
Clicking a thumbnail with the right mouse-button selects the image and displays a menu of command short-cuts.



Clicking the right mouse-button in an empty part of the window displays the menu shown below.

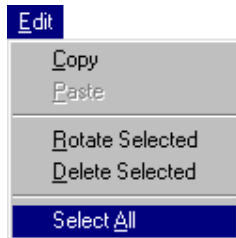


These menus allow quick access to the commands in the menu and tool bar. These commands are explained in the following chapter, "**Working with Images.**"



## Copying all images to disk

Choose **Select All** from the **Edit** menu.



**Short-cut:** Press **A** on the keyboard while holding down the ctrl key or click the right mouse-button in an empty area of the window and choose **Select All** from the right-button menu.

All thumbnails in the Nikon CoolPix900 window will be selected.

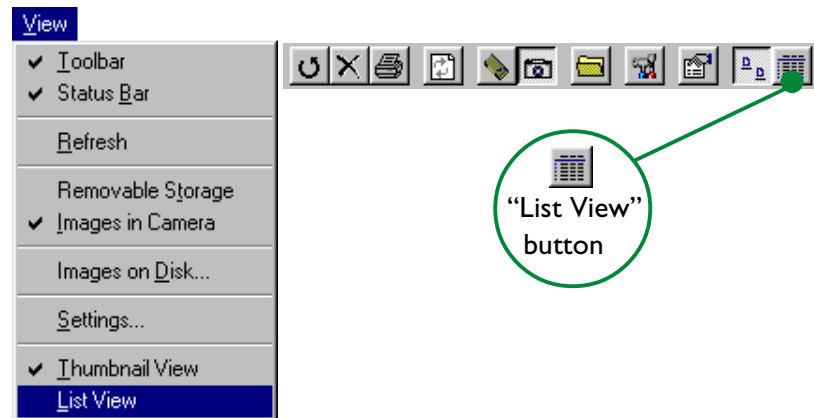


Drag and drop the thumbnails to another folder to copy all images to disk.

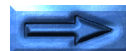
The **Select All** command can also be used when printing or deleting images.

## Displaying image files as a list

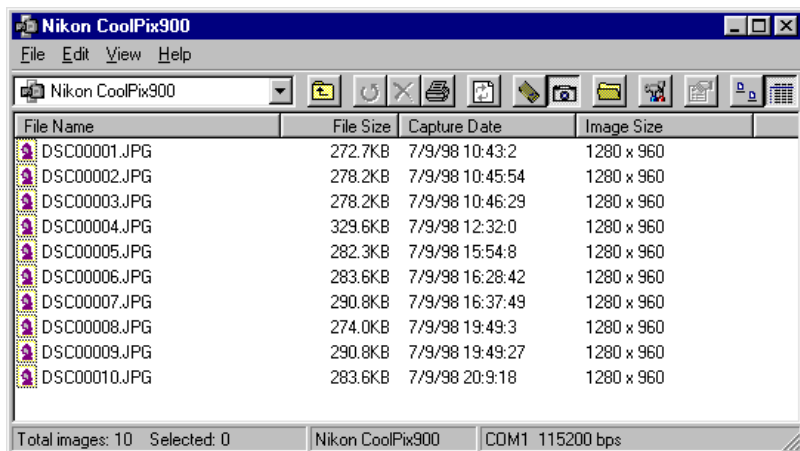
To view information on the image's date of recording, a list-style display can be chosen by selecting **List View** from the **View** menu or by clicking the **List View** button in the tool bar.



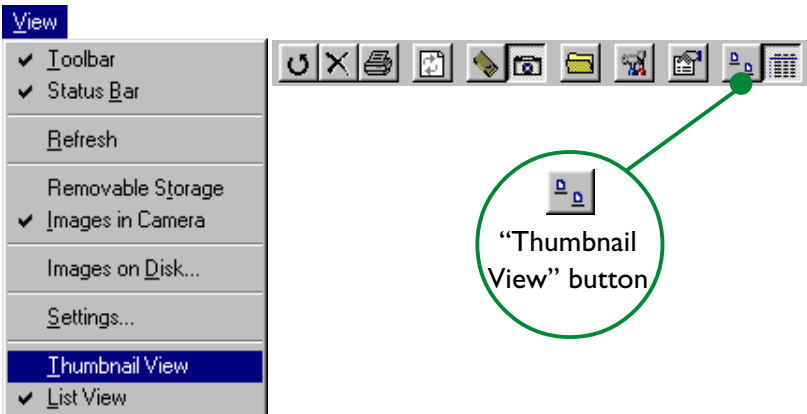
**Short-cut:** Click the right mouse-button in an empty area of the window and choose **List View** from the right-button menu.



The list-style display is shown below.



To view the images as thumbnail previews once more, select **Thumbnail View** from the **View** menu or click the **Thumbnail View** button.



**Short-cut:** Click the right mouse-button in an empty area of the window and choose **Thumbnail View** from the right-button menu.

### Step 6 — Close the Nikon CoolPix900 window

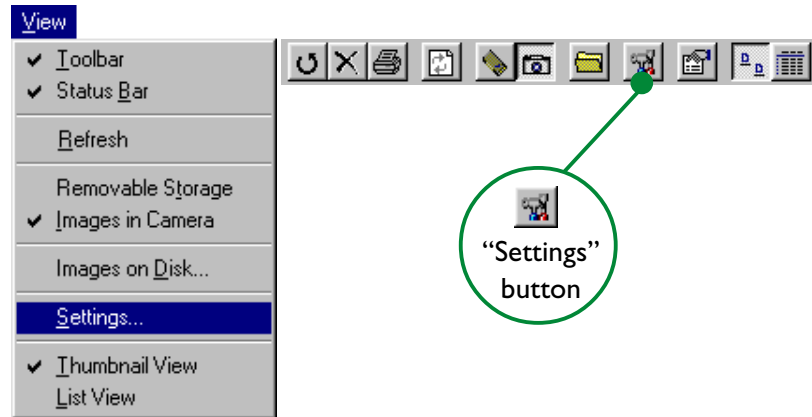
To close the Nikon CoolPix900 window, choose **Close** from the **File** menu or click the close button (X) at the right end of the title bar.



## Port and Removable Drive Settings

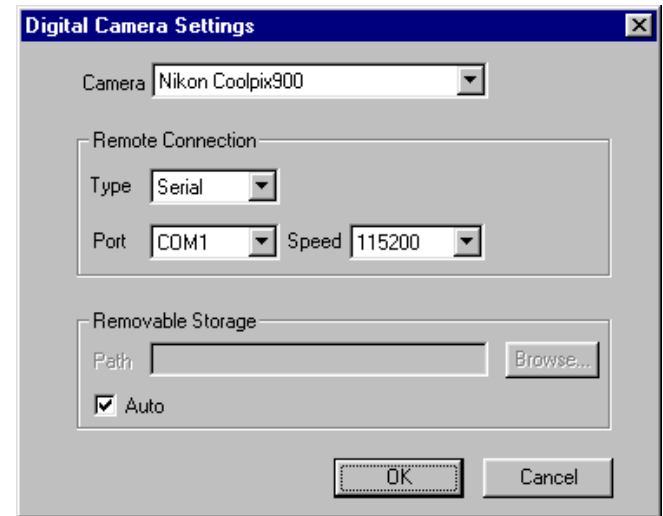
The port used for connection to the camera, the data-transfer rate (port speed) and the path to the drive containing a compact flash-memory card can be changed after installation.

In the Nikon CoolPix900 window, choose **Settings...** from the **View** menu or click the **Settings** button in the tool bar.



**Short-cut:** Click the right mouse-button in an empty area of the window and choose **Settings** from the right-button menu.

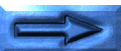
The following Digital Camera Settings dialog box will be displayed.



Make the desired changes to port settings and click **OK**. The options available in the Digital Camera Settings dialog box are explained below.

### Camera

The name of the camera currently connected is displayed. The only option available is "Nikon Coolpix900."



## Remote Connection

### Type

The only available port type is “Serial.”

### Port

Click the arrow button to the right of this text box to display a list of supported ports. Choose the port to which the camera is connected from among “AUTO,” “COM1,” “COM2,” “COM3,” and “COM4.” If “AUTO” is chosen, the computer will automatically detect the port to which the camera is connected.

**Note:** *If you will be consistently connecting your camera to only one port, to speed processing it is recommended that you choose the appropriate port number instead of **AUTO**.*

### Speed

Clicking the arrow button to the right of this field displays a list of supported speeds (data-transfer rates). Choose “115200(bps)” or “19200(bps).”

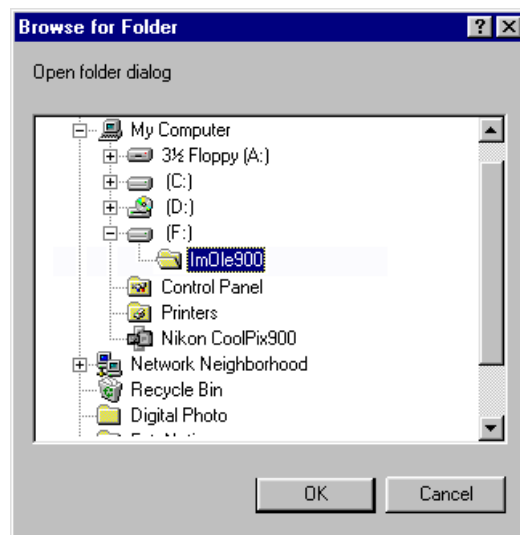
**Note:** *The default data-transfer rate is 115200bps. This setting may be too high for some i486 machines. If you experience communications problems, try setting the data-transfer rate to 19200bps.*

## Removable Storage

Check **Auto** to have the computer automatically detect the PC-card slot or compact flash-memory card-reader containing a compact flash-memory card. If this box is not checked, the **Path** text box and **Browse...** button will be active, allowing you to specify the path to the drive containing a compact flash-memory card.



Click **Browse...** to display the Browse for Folder dialog box shown below. Navigate to the drive containing the compact-flash memory card and click **OK**. The chosen path will appear in the **Path** text box.



### OK

Accepts any changes to port settings and returns you to the Nikon CoolPix900 window.

### Cancel

Returns you to the Nikon CoolPix900 window without changing port settings.

## Cleaning Up the Temporary Folder

---

When images in the Nikon CoolPix900 window are opened in other applications or repeatedly copied to disk, a temporary file containing the image data will be created in a folder in the Windows temporary folder (path “(Windows folder)\Temp\Camexp”). These files remain after **Nikon View 900** terminates. To increase disk space, you may wish to delete the contents of this temporary folder periodically. Note however that if an image in the Nikon CoolPix900 window is opened in another application and then saved using the application’s “Save” command, the image will be saved in the temporary folder. It is recommended that you save images in a different location using the “Save As” command to avoid accidental deletion of files when cleaning up the temporary folder.

**Note:** *The “Windows folder” is the folder to which Windows has been installed.*

## Notes on Using the Camera as a Drive

---

**Nikon View 900** allows the camera’s memory to be used in much the same way that you would use any other drive. Note however that certain limitations apply as listed below.

### **Only one camera is supported at a time:**

**Nikon View 900** supports one camera, attached to a serial (COM 1–4) port. It does not support multiple connected cameras or port-extension boards.

### **The camera cannot be shared over a network:**

The camera will not function as a network drive. Consequently the **Nikon CoolPix900** icon will not be visible to other computers.

### **The camera’s memory is write-protected:**

The camera’s memory is treated as write-protected when viewed from the Nikon CoolPix900 window. Files cannot be copied from other folders to the Nikon CoolPix900 window, nor can files be saved to the camera after editing in another application. The file names displayed in the Nikon CoolPix900 window cannot be changed. Should you wish to change a file name do so after copying the image to disk.



# Working with Images

This chapter describes how to browse the images in the camera's memory, preview images, copy them to disk, and open them for editing in other applications. For information on general Windows operations, refer to your Windows manual.

## Browsing Images

Using **Nikon View 900**, it is possible to browse the images stored in your camera and display them as thumbnails.

### Browsing images in the Nikon CoolPix900 window

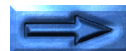
In the My Computer folder, double-click the **Nikon CoolPix900** icon.



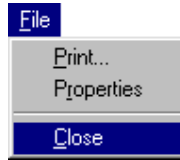
The Nikon CoolPix900 window will open, showing thumbnail preview images of the images stored in the camera.



The operations that can be performed in the Nikon CoolPix900 window include selecting thumbnails, previewing and printing images, deleting images and copying images to disk. See the following sections for details.



To close the Nikon CoolPix900 window and end the thumbnail display, choose **C**lose from the **F**ile menu or click the close button (✕) at the right end of the title bar.

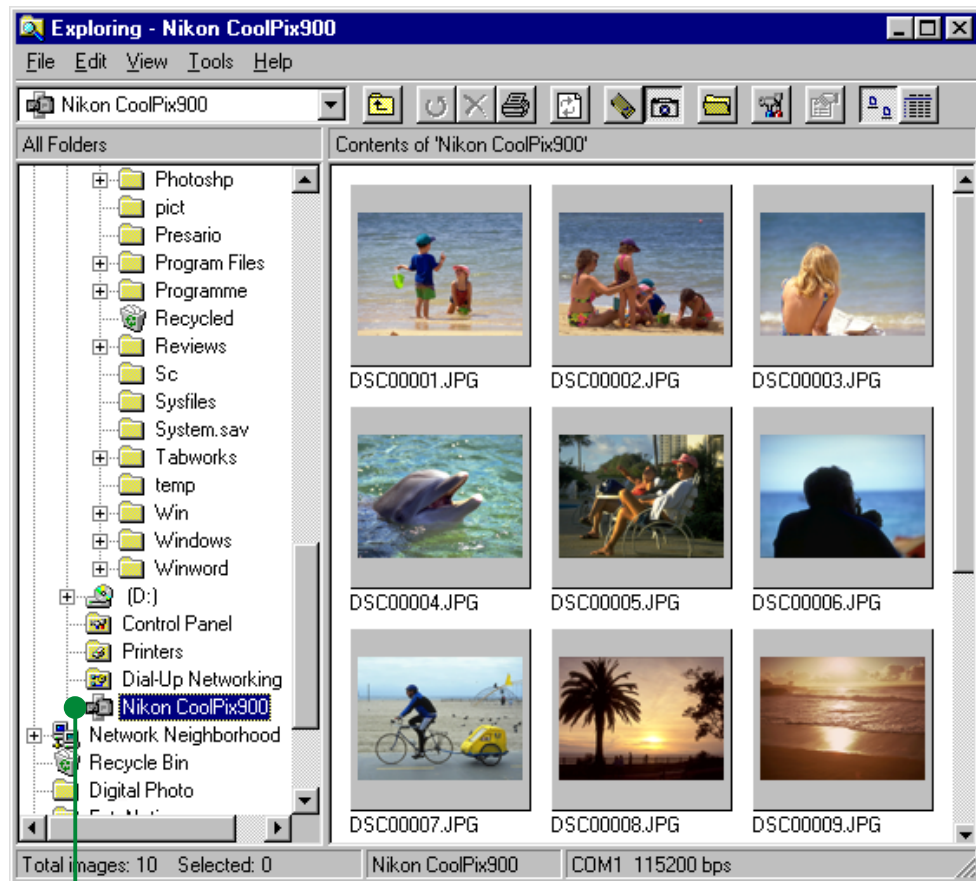


## Browsing images in the Windows Explorer

With *Nikon View 900* installed, images in the camera can also be browsed using the Windows Explorer. Click the **S**tart button in the taskbar and select **W**indows **E**xplorer from the **P**rograms sub-menu.



Clicking “Nikon CoolPix900,” which may be found under “My Computer” in the Explorer’s folder list, displays the contents of the camera’s memory as thumbnails.



Images can be opened with a double-click or copied to other folders using drag and drop. The menus and tool bar function in the same way as those in the Nikon CoolPix900 window.

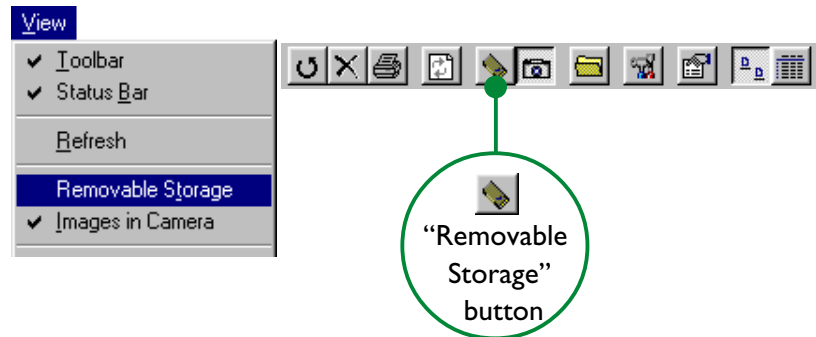
Select **Nikon CoolPix900**

## Browsing Compact Flash-Memory Cards

If your computer has a Type II PCMCIA card drive, you can read compact flash-memory cards using a flash-memory adapter (available separately from Nikon). Compact flash memory can also be read using a compact flash card-reader. If a card containing images recorded by the COOLPIX 900 is inserted in either device, its contents can be browsed from the CoolPix900 window. If another card is inserted in the camera and the camera connected to your computer, you can switch freely between browsing images on the card and images in the camera.

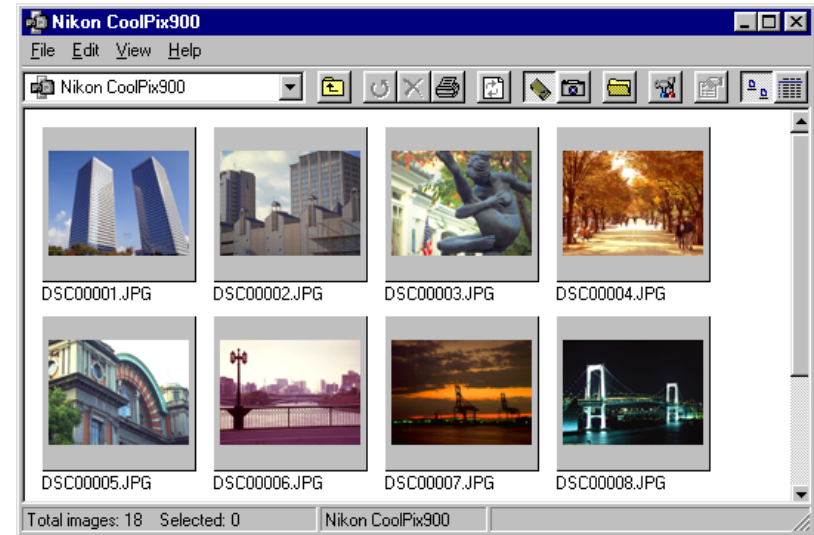
**Note:** By default, Nikon View 900 will automatically detect the drive containing the flash-memory card. It is also possible to specify a path, as described in “Port and Removable Drive Settings,” above.

To view images stored on a flash-memory card, select **Removable Storage** from the **View** menu in the Nikon CoolPix900 window or click the **Removable Storage** button in the tool bar.



**Short-cut:** Click the right mouse-button in an empty area of the window and choose **Removable Storage** from the right-button menu.

Thumbnail previews of the images in the card will appear in the Nikon CoolPix900 window.

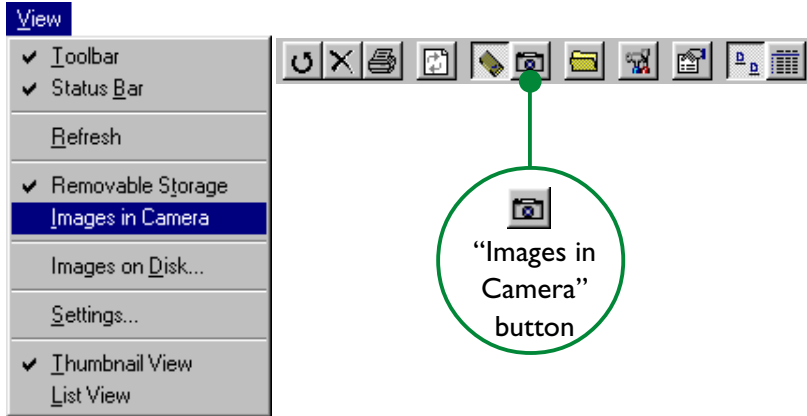


### When the camera is not connected...

Double-clicking the **Nikon CoolPix900** icon in the My Computer folder when the camera is not connected will produce a connection error. If the camera's flash-memory card is inserted in a card slot or card reader, you can nevertheless view the contents of the card by selecting **Removable Storage** from the **View** menu or clicking the **Removable Storage** button in the tool bar.



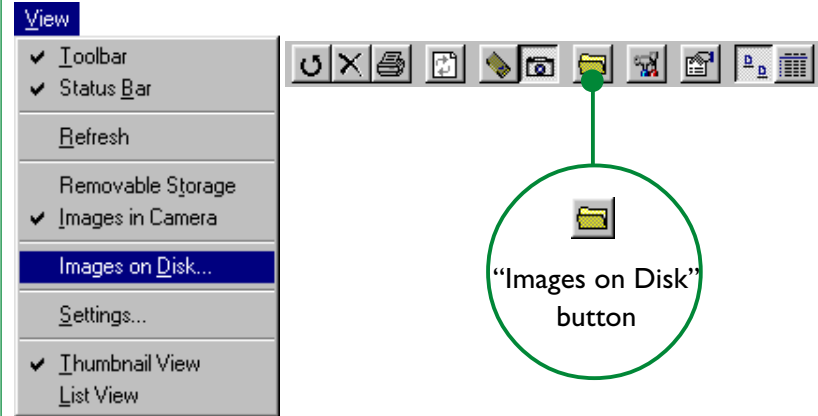
To view the contents of the camera's memory once more, select **Images in Camera** from the **View** menu or click the **Images in Camera** button in the tool bar.



**Short-cut:** Click the right mouse-button in an empty area of the window and choose **Images in Camera** from the right-button menu.

## Browsing Images on Disk

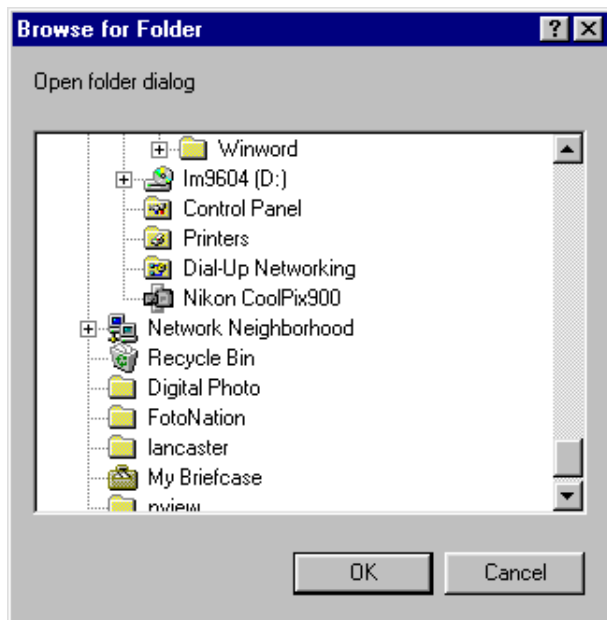
*Nikon View 900* can be used to browse images on disk even when the camera is not connected. To view images on disk, select **Images on Disk...** from the **View** menu or click the **Images on Disk** button in the tool bar.



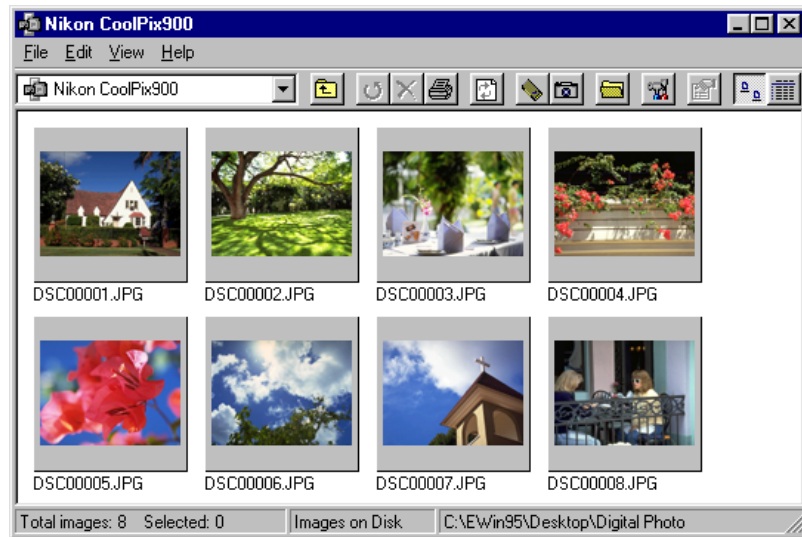
**Short-cut:** Click the right mouse-button in an empty area of the window and choose **Images on Disk** from the right-button menu.



The Browse for Folder dialog will appear, allowing you to choose the folder containing the images to be browsed.



Select the desired folder and click **OK**. The images in the selected folder will be displayed as thumbnails in the Nikon CoolPix900 window.

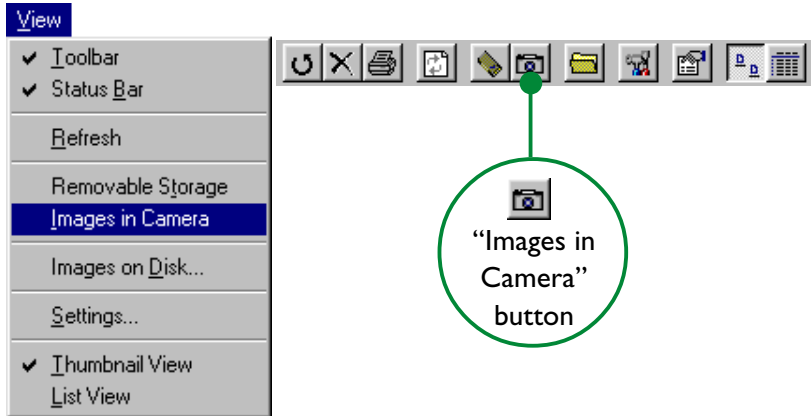


### When the camera is not connected...

Double-clicking the **Nikon CoolPix900** icon in the My Computer folder when the camera is not connected will produce a connection error. You will still be able to view the contents of a disk by selecting **Images on Disk...** from the **View** menu or clicking the **Images on Disk** button in the tool bar.



To view the contents of the camera's memory once more, select **Images in Camera** from the **View** menu or click the **Images in Camera** button in the tool bar.



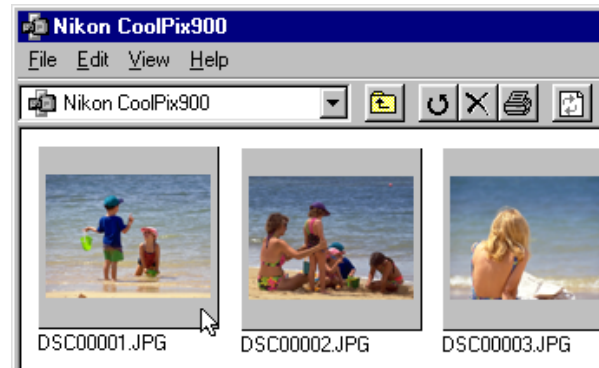
**Short-cut:** Click the right mouse-button in an empty area of the window and choose **Images in Camera** from the right-button menu.

## Viewing Images

Images can be viewed at full resolution in image windows. Images in image windows can be rotated and zoomed in or out using the controls in the image window tool bar. Any number of image windows may be open at one time.

### Opening images in image windows

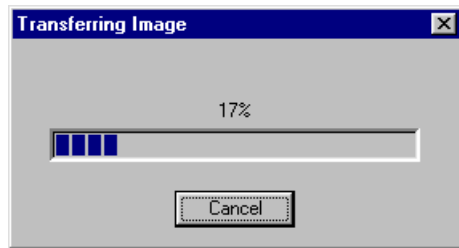
Double-click the thumbnail you wish to view in the Nikon CoolPix900 window.



**Short-cut:** Select the thumbnail with the right mouse-button and choose **Preview** from the right-button menu.



While image data are being copied to the image window, the following indicator will be displayed.



Once transfer is complete, the image will be opened in an image window.



## Rotating images and zooming images in and out

Images in the image window can be rotated or zoomed in or out using the buttons in the image window tool bar.



**Rotate**

The view image will be rotated ninety degrees to the left each time this button is clicked



**Zoom In**

Click to zoom the view image in



**Zoom Out**

Click to zoom the view image out

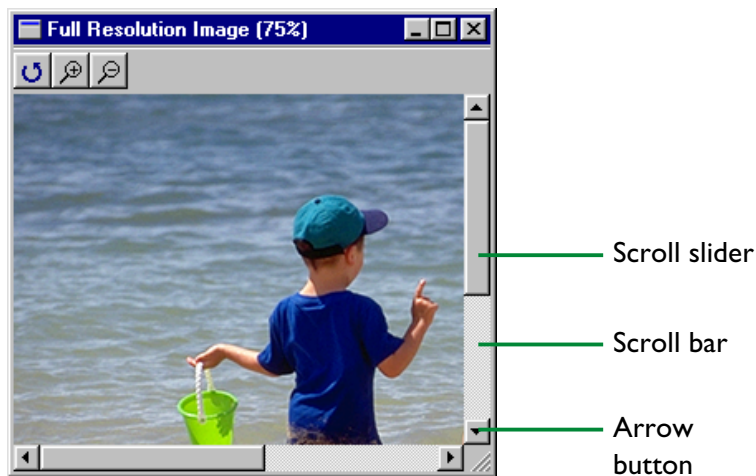
**Note:** *Rotation and zoom operations performed in the image window are not reflected in the thumbnail images in the Nikon CoolPix900 window.*





## Scrolling and resizing the image window

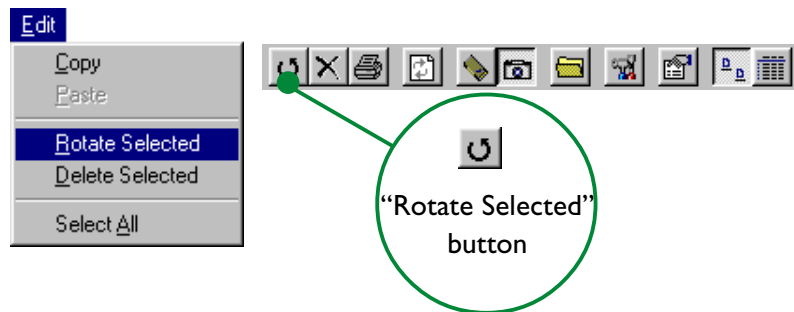
When the entire image does not fit in the image window, you can view hidden portion by dragging the scroll sliders at the right and bottom of the window, or by clicking the scroll bars or arrow buttons. Alternatively, you can enlarge the window itself dragging the window's borders.



To close an image window, click the close button (X) at the right end of the title bar. The image window will close, returning you to the Nikon CoolPix900 window.

## Rotating Thumbnails

Selected thumbnails in the Nikon CoolPix900 window can be rotated ninety degrees to the right by choosing **Rotate Selected** from the **Edit** menu or clicking the **Rotate Selected** button in the tool bar.



**Short-cut:** Select the thumbnail with the right mouse-button and choose **Rotate** from the right-button menu.



**Note:** Rotations applied to thumbnails in the Nikon CoolPix900 window have no effect on the images in the camera or on copies of the image that have already been saved to disk. Rotations will be saved if the image is copied to disk after having been rotated.

## Deleting Images

Images can be deleted from the camera's memory when no longer needed. Note that images can not be recovered from the Recycle Bin after deletion; be sure to back up any images you would like to keep.

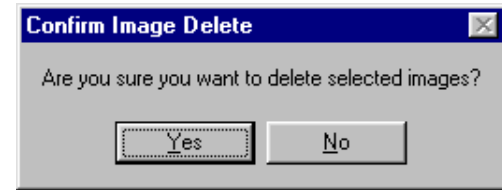
**Caution:** *Images that have been protected using the camera's protect option can be deleted.*

Selected images can be deleted using the **Delete Selected** command. In the Nikon CoolPix900 window, select the images you wish to delete and choose **Delete Selected** from the **Edit** menu or click the **Delete Selected** button in the tool bar.



**Short-cut:** *Delete selected thumbnails by pressing the del key on the keyboard or click thumbnails with the right mouse-button and choose **Delete** from the right-button menu.*

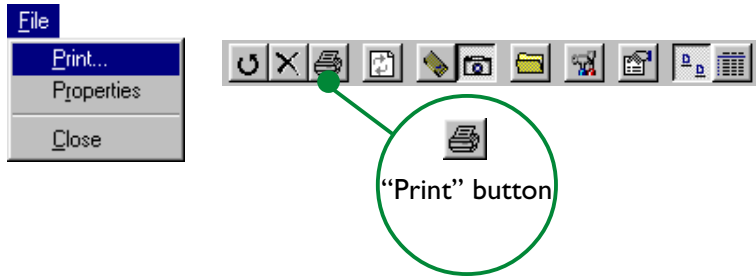
A confirmation dialog will appear.



Click **Yes** to delete the selected images. Click **No** to return to the Nikon CoolPix900 window without deleting the images.

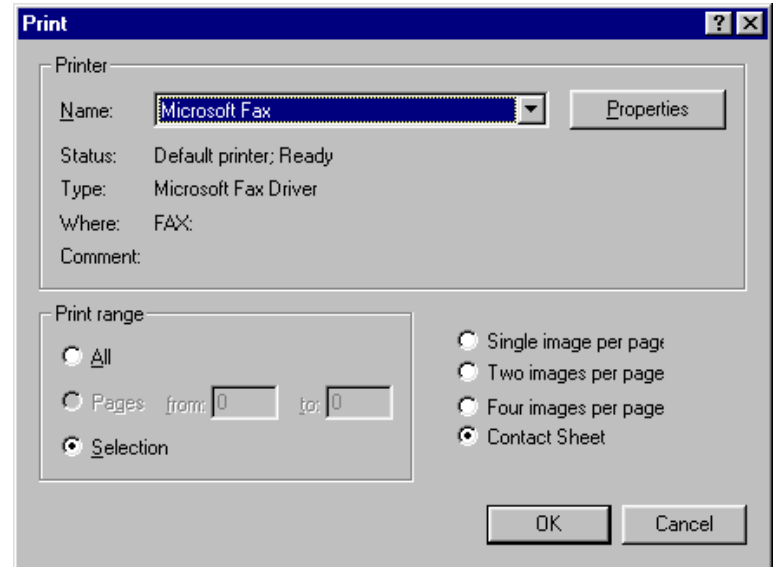
## Printing Images

**Nikon View 900** allows you to print selected images or all the images in the Nikon CoolPix900 window. To print selected images, select the images you wish to print and then choose **Print...** from the **File** menu or click the **Print** button in the tool bar.



**Short-cut:** Select the thumbnail with the right mouse-button and choose **Print...** from the right-button menu.

The Print dialog box will appear.



After making changes to printer settings, click **OK** to print the selected images.



The options available in the Print dialog box are explained below.

## **Printer**

### **Name**

Gives the name of the currently selected printer. Clicking the arrow key to the right of the listed printer will bring up a list of the printer drivers currently installed on your system, allowing you to select a different printer. The type, location, and current status of the selected printer are listed beneath this item.

### **Properties**

Clicking this button brings up the Properties dialog box for the selected printer, where you can change paper size and graphics settings. The actual contents of the Properties dialog box depend on the printer selected.

## **Print range**

### **All**

If this option is selected, all the images displayed in the Nikon CoolPix900 window will be printed.

### **Selection**

If this option is selected, only the images currently selected in the Nikon CoolPix900 window will be printed.

## **Number of images per page**

### **Single image per page**

If this option is selected, each image will be printed on a separate sheet.

### **Two images per page**

If this option is selected, two images will be printed per sheet.

### **Four images per page**

Select this option to print four images per sheet.

### **Contact Sheet**

Selecting this option prints selected images as thumbnails.

## **OK**

Prints the image at the specified settings and returns you to the Nikon CoolPix900 window.

## **Cancel**

Returns you to the Nikon CoolPix900 window without printing the image.

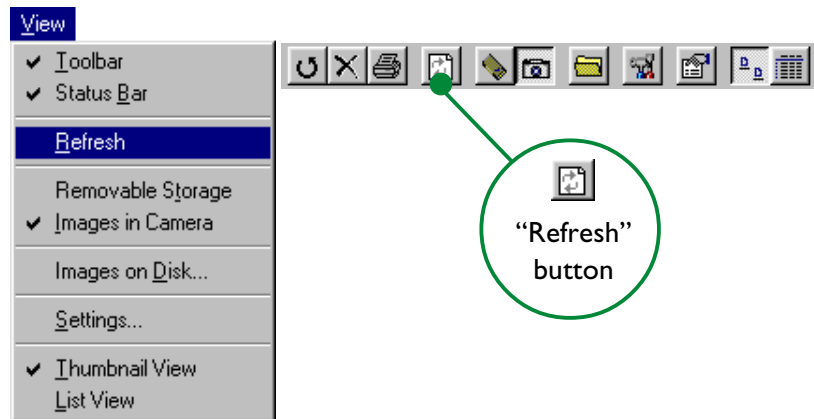
## Refreshing Thumbnails

The COOLPIX 900 can be disconnected while your computer is on and later reconnected to the computer. If you have taken new photographs or deleted or changed the hide/protect status of existing photographs while the camera was disconnected, you will need to update the thumbnails in the Nikon CoolPix900 window. It may also be necessary to update thumbnails if you have replaced a memory card while browsing images on the camera's flash-memory card using a compact-flash card-reader or card drive, or have copied files to or deleted files from the currently selected folder while browsing images on disk.

**✓ Caution:** Do not disconnect the camera while the data-transfer icon (↔) is flashing.

**Note:** When browsing images stored in the camera, a communications error will result if an operation is performed on the images in the Nikon CoolPix900 window while the camera is disconnected. When browsing images on disk or compact flash-memory card, a communications error will result if an operation is performed the images in the Nikon CoolPix900 window with the storage medium removed from the drive.

To update the thumbnails in the Nikon CoolPix900 window after reconnecting the camera, select **Refresh** from the **View** menu or click the **Refresh** button in the tool bar.

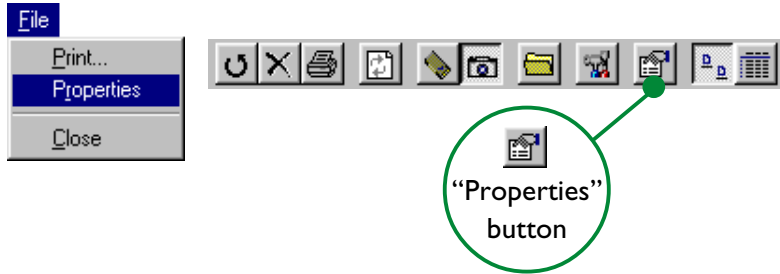


**Short-cut:** Click the right mouse-button in an empty area of the window and choose **Refresh** from the right-button menu.

The images in the selected medium (a compact flash-memory card if the **Removable Storage** item in the **View** menu is selected, the camera if **Images in Camera** is selected, or a specified folder on a disk if **Images on Disk...** is selected) will be read and thumbnail previews displayed in the Nikon CoolPix900 window.

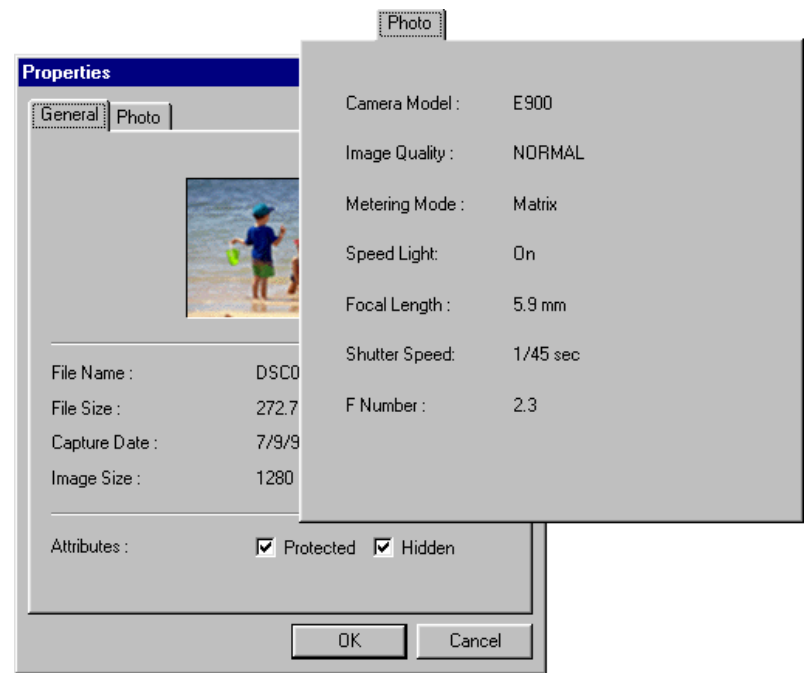
## Viewing Image Information

Information on selected images can be viewed from the Nikon CoolPix900 window. After selecting the thumbnails, choose **Properties** from the **File** menu or click the **Properties** button in the tool bar.



**Short-cut:** Click a thumbnail with the right mouse-button and choose **Properties** from the right-button menu.

The Properties dialog box will be displayed. The Properties dialog box contains two panels, General and Photo. You can switch between panels by clicking the tabs at the top of the dialog.



The General panel gives the file name, file size, capture date, and dimensions of the selected image. "Protected" and "Hidden" attributes set in the camera's playback mode can be changed using the **Attribute** check boxes. The Photo panel contains information on camera settings such as image quality and metering at the time the photograph was made.

Click **OK** to accept any changes to image attributes and close the Properties dialog box. Clicking **Cancel** closes the dialog without making changes to attributes.

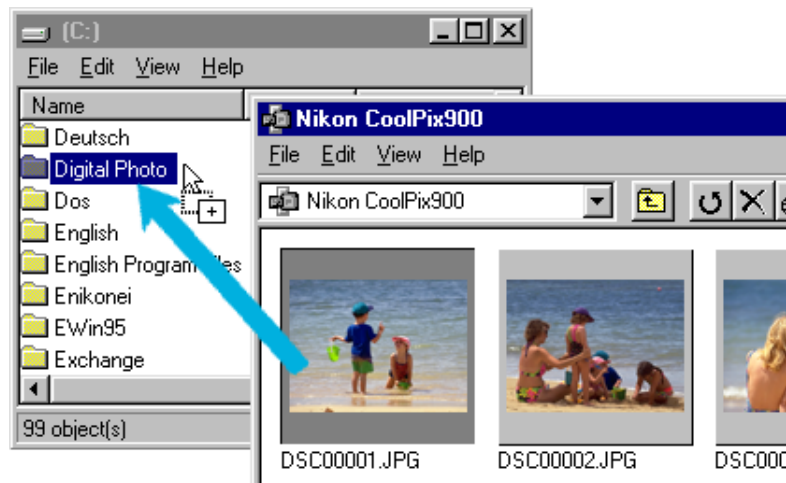
## Copying Images to Disk

The images displayed in the Nikon CoolPix900 window can be copied to disk using drag-and-drop or copy-and-paste. Before copying images to disk, locate or create a destination folder.

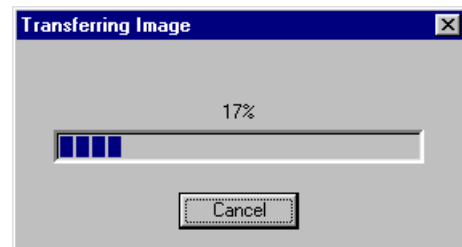
**Note:** Images are stored in the camera's memory (flash-memory cards) under filenames starting from "DSC00001.jpg." When images are copied to disk, Nikon View 900 checks the temporary folder ("(Windows folder)\Temp\Camexp") to determine whether a file with the same name has been copied before. If an image with the same filename has been copied previously, a new file will be created by adding a number in square brackets to the name ([1], [2], [3], [...]). As the camera may at different times use the same filename for different images, this prevents users from accidentally overwriting image files on the computer. If, after cleaning up the temporary folder, you copy an image to a folder containing another image with the same name, you will however be asked whether you wish to replace the existing file. If you select **Yes**, the existing file will be replaced. If you select **No**, although the file will not be copied, later copies of the file will be saved under names created by adding a number in brackets ([1], [2], [3], [...]) to the filename. It is recommended that after copying images from the camera, you change the resulting filename to make file administration easier.

## Copying images by drag and drop

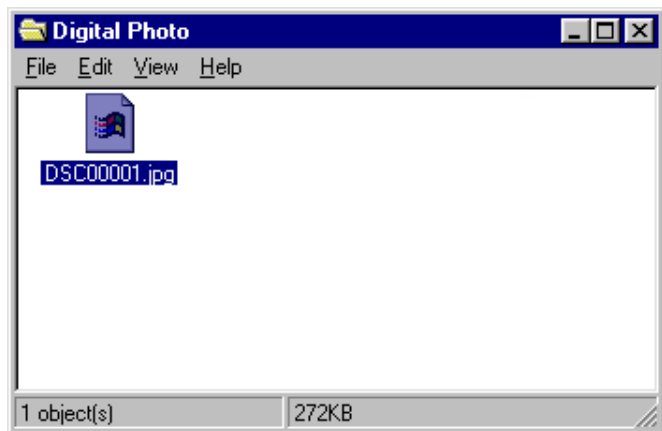
Select the images you wish to copy by clicking their thumbnails in the Nikon CoolPix900 window (to select multiple images, hold down the **ctrl** key on the keyboard while clicking each image in turn), then drag the images to the destination folder and release the mouse button.



The following progress indicator will be displayed while images are copied to disk. Click **Cancel** to abort the operation.

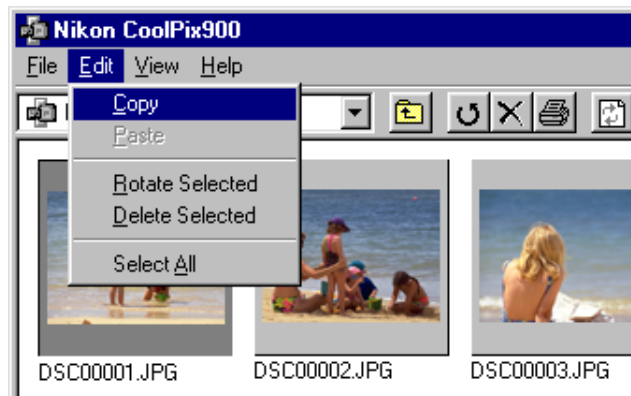


Once all images have been copied, the progress indicator will disappear. Copies of the selected images will appear in the destination folder.



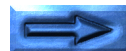
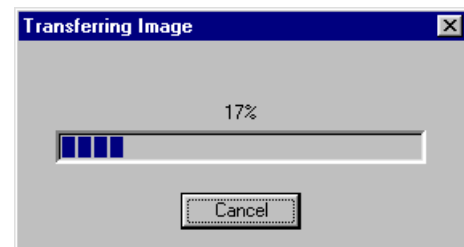
## Copying images using copy-and-paste

Select the images you wish to copy by clicking their thumbnails in the Nikon CoolPix900 window (to select multiple images, hold down the **ctrl** key on the keyboard while clicking each image in turn), then select **C**opy from the **E**dit menu.



**Short-cut:** Press **C** while holding down the **ctrl** key on the keyboard or click a thumbnail with the right mouse-button and select **C**opy from the right-button menu.

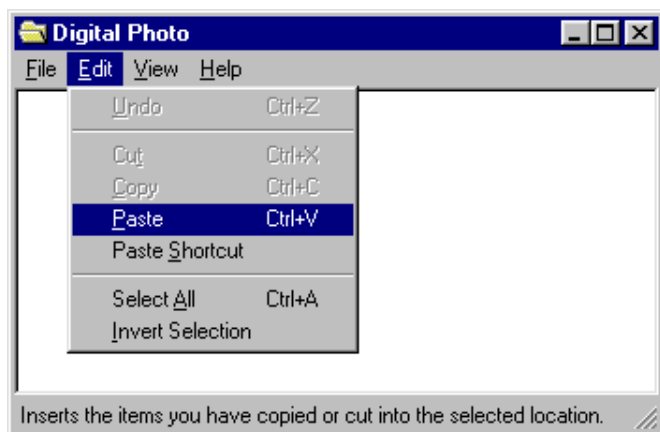
The following progress indicator will be displayed while images are copied to the clipboard. Click **C**ancel to abort the operation.



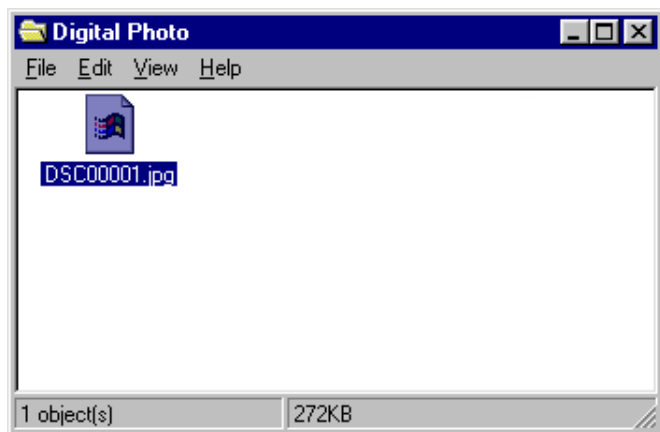


Once all images have been copied, the progress indicator will disappear.

Open the destination folder and select **Paste** from the folder's **Edit** menu.



The selected images will be copied to the destination folder.



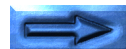
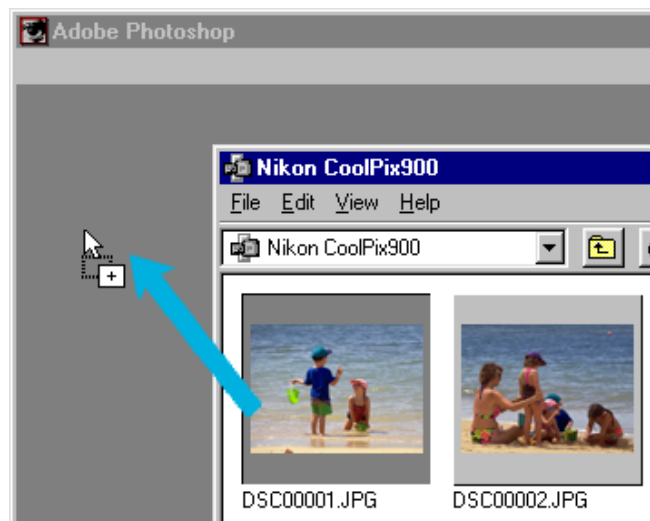
## Opening Images in Another Application

The images in the Nikon CoolPix900 window can be opened in any application that can handle JPEG (".JPG") files. Images can be opened directly from the application or by drag-and-drop.

**Caution:** After opening images from the camera in another application, save the images using the **Save As...** rather than the **Save** command. Images saved with the **Save** command will be saved in the temporary folder ("(Windows folder)\Temp\Camexp").

### Opening image files by drag-and-drop

Images that have been selected in the Nikon CoolPix900 window can be opened in another application by dragging the thumbnails over an open application window and releasing the mouse button.

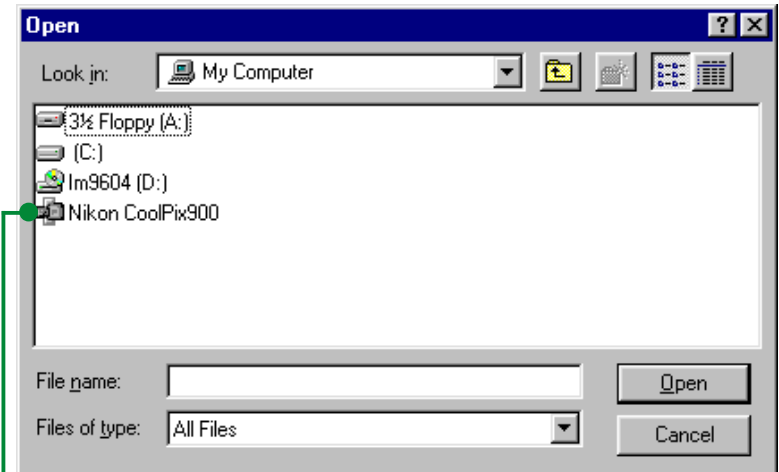


The images will be opened in the application.



## Opening image files from other applications

Images can be opened in another application by selecting **Open...** or **Open File...** from the application's **File** menu. In the application's Open dialog, select "Nikon CoolPix900" from the drives listed under "My Computer" and click the **Open** button.



Select  
**Nikon CoolPix900**



Thumbnail previews of the images in the Nikon CoolPix900 window will be displayed (the list display option is not available).



**Note:** The dialog shown above is the standard Windows Open dialog for 32-bit applications. The contents of the dialog may vary depending on the application.

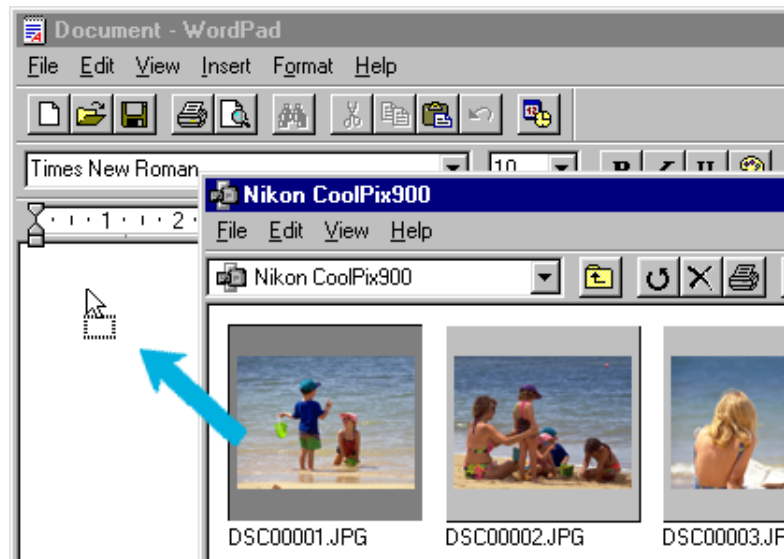
Select the thumbnail you wish to open and click the **Open** button. The selected image will be opened in a window within the application.

## Inserting Images into Documents

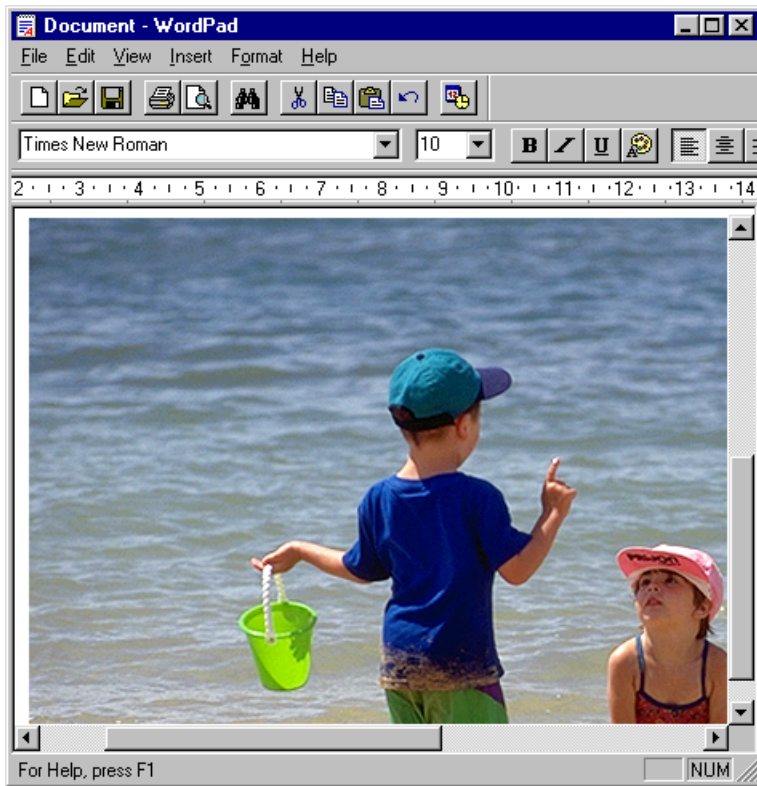
**Nikon View 900** supports OLE 2.0, making it possible to insert images taken with the COOLPIX 900 into documents created by any OLE 2.0 application that supports the JPEG (".JPG") image format. Images can be inserted in documents directly by drag-and-drop or cut-and-paste, or embedded using insert object command.

### Inserting images by drag-and-drop

Select the image you wish to insert and drag it over an open document window in another application.

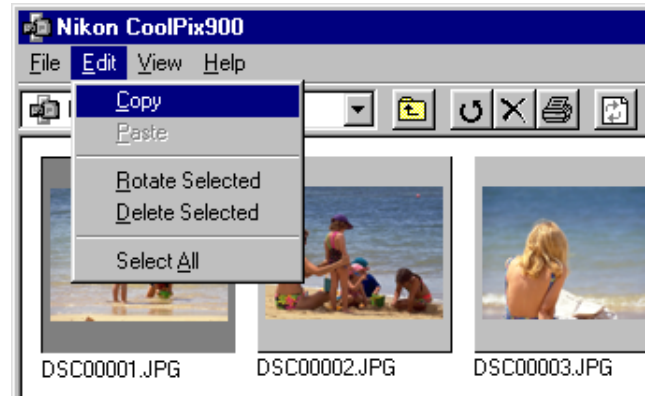


If the application supports OLE 2.0, the image will be inserted in the document as shown below.

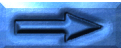


## Inserting images using copy-and-paste

In the Nikon CoolPix900 window, select the image you wish to insert and select **C**opy from the **E**dit menu.

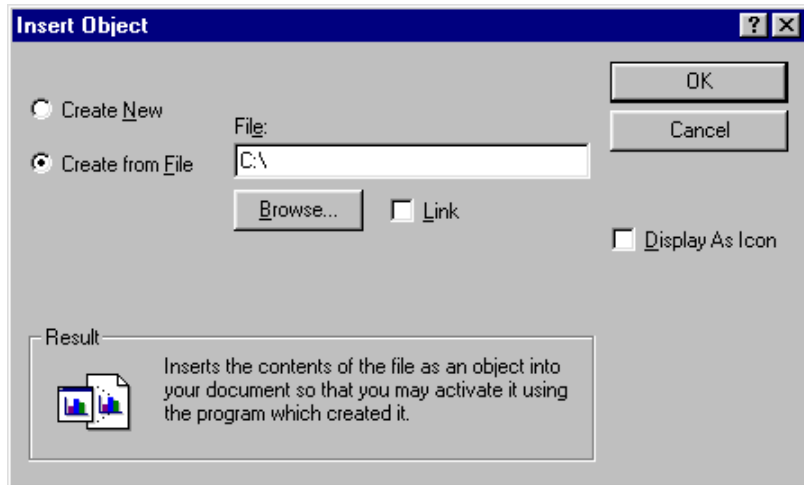


Next, activate the destination application and display the document window into which you wish to insert the image. Paste the image into the document at the current cursor position by selecting **P**aste from the application's **E**dit menu.



## Inserting images using the insert object command

In applications that support OLE 2.0, images can be inserted in documents using the application's "insert object" command. In the Insert Object dialog, choose **Create from File** and click **Browse...**.



In the Browse dialog, select "Nikon CoolPix900" from the drives listed under "My Computer" in the **Look in** pop-up menu. Thumbnail previews of the images in the Nikon CoolPix900 window will be displayed.



Select the image you wish to insert and click the **Insert** button to return to the Insert Object dialog. Click **OK** to insert the selected image in the document.

# Nikon View 900 Reference

This chapter provides a brief reference guide to *Nikon View 900*'s main windows and menus. Refer to this guide when you want to know the meaning of a command or button. Window operations are detailed in “*Getting Started*” and “*Working with Images*.”

## The Nikon CoolPix900 Window

From this window you can browse the contents of the camera's memory, compact flash-memory card, or disk, copy images to disk or open them in other applications.



To open the Nikon CoolPix900 window, double-click the **Nikon CoolPix900** icon in the My Computer folder. The Nikon CoolPix900 window can be used to accomplish the tasks listed below.

### Browsing images

Thumbnail previews of the images stored in the camera's memory are displayed in the Nikon CoolPix900 window. The file name of each image is displayed below the thumbnail. Images can also be viewed as a list giving details of file size and creation date (see "**Getting Started**"), or you can browse images on disk or in flash-memory cards.

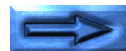
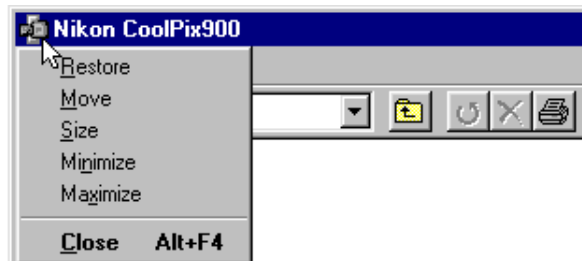
### File operations

Images can be copied to disk or opened in other applications using drag and drop. Double-clicking a thumbnail opens the image at full resolution in an image window.

The functions of the various parts of the Nikon CoolPix900 window are described below.

### The Title Bar

Drag the title bar to move the window to a new location, or enlarge the window to fill the screen by double-clicking the title bar. Clicking the icon at the left end of the title bar displays the standard windows control menu for the Nikon CoolPix900 window. The control menu allows you to perform operations on the window itself, rather than on the images it contains.



The items in the control menu are listed below.

### **Restore**

Restores the window to its original size after it has been enlarged using the **Maximize** command.

### **Move**

Allows you to use the arrow keys or mouse to change the position of the window. When you have moved the window to the desired position, click the right mouse button or press Enter.

### **Size**

Allows you to use the arrow keys or mouse to change the size of the window.

### **Minimize**

Reduces the Nikon CoolPix900 window to a button on the taskbar.

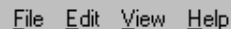
### **Maximize**

Enlarges the Nikon CoolPix900 window to fill the screen.

### **Close**

Closes the Nikon CoolPix900 window, ending your current session of *Nikon View 900*.

## **The Menu Bar**

A screenshot of the menu bar from the Nikon CoolPix900 software. It shows four menu items: 'File', 'Edit', 'View', and 'Help', each with a small icon to its left.

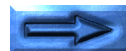
The menus in the menu bar allow you to manage images in the Nikon CoolPix900 window. The commands available in each menu are outlined below. A more complete description of the tasks that may be performed using the menu commands may be found in the chapter, “*Working with Images*.”

### **The File Menu**



### **Print...**

Allows you to print the currently selected image to a printer you specify (see “*Working with Images: Printing Images*”). This command can also be accessed by clicking the **Print** button in the tool bar.





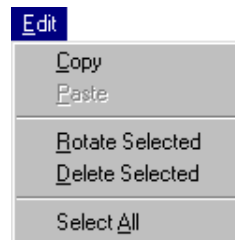
## Properties

Displays the properties for the selected image in a Properties dialog box (see “**Working with Images: Viewing Image Information**”). This command can also be accessed by clicking the **Properties** button in the tool bar. The Properties dialog box contains a General panel and a Photo panel. The General panel gives the file name, file size, capture date, and dimensions of the selected image and allows the user to change the “Protected” and “Hidden” status of images. The Photo panel gives information on camera settings in effect when the image was recorded, such as image quality and metering.

## Close

Closes the Nikon CoolPix900 window, terminating your current session of **Nikon View 900**. You can also quit the program by clicking the close button (✕) at the right end of the title bar.

## The Edit Menu



### Copy

Copies the selected image to the clipboard. The image can be pasted into another folder or application using the paste command.

### Paste

This command is always grayed out and unavailable.

### Rotate Selected

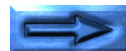
Rotates selected images ninety degrees counter-clockwise (see “**Working with Images: Rotating Images**”). This command can also be accessed by clicking the **Rotate Selected** button in the tool bar.

### Delete Selected

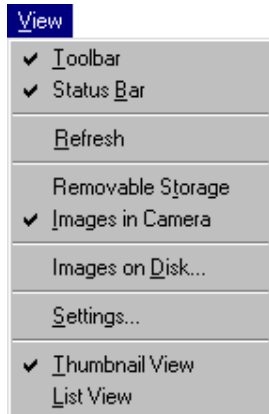
The selected image is deleted from the medium currently being browsed (see “**Working with Images: Deleting Images**”). This command can also be accessed by clicking the **Delete Selected** button in the tool bar.

### Select All

Selects all the images in the Nikon CoolPix900 window for copying, printing, or deletion.



## The View Menu



### Toolbar

If there is a check-mark next to this item, the tool bar will be displayed in the Nikon CoolPix900 window.

### Status Bar

If this item is checked, a status bar will be displayed at the bottom of the Nikon CoolPix900 window (see “*The Status Bar*,” below).

### Refresh

Updates the thumbnails in the Nikon CoolPix900 window. This command can also be accessed by clicking the **Refresh** button in the tool bar.

### Removable Storage

Allows you to browse images recorded by the COOLPIX 900 on a flash-memory card when the card is inserted in a compact flash card-reader or PC card drive (a PC-card adapter is required to use compact flash-memory cards in

a PC card drive). See “*Browsing Compact-Flash Memory Cards*” in “*Working with Images*.” This command can also be accessed by clicking the **Removable Storage** button in the tool bar.

### Images in Camera

Allows you to browse the images in the camera’s memory. This command can also be accessed by clicking the **Images in Camera** button in the tool bar.

### Images on Disk...

Allows you to browse images in a selected folder (see “*Working with Images: Browsing Images on Disk*”). This command can also be accessed by clicking the **Images on Disk** button in the tool bar.

### Settings...

Displays the Digital Camera Settings dialog box, where you can make changes to port settings (see “*Getting Started: Port and Removable Drive Settings*”). This command can also be accessed by clicking the **Settings** button in the tool bar.

### Thumbnail View

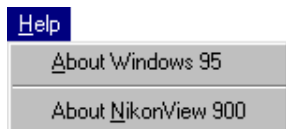
Displays the images as thumbnails. This command can also be accessed by clicking the **Thumbnail View** button in the tool bar.

### List View

Displays the images as a simple list, without thumbnails. This command can also be accessed by clicking the **List View** button in the tool bar.



## The Help Menu



## About Windows 95

Displays Windows 95 version information.

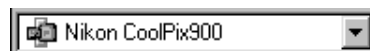
## About NikonView 900

Opens the “About NikonView 900” window, which gives copyright information for the program.

## The Tool Bar



The commands accessible from the Nikon CoolPix900 window tool bar are outlined below. You can also learn the function of a button by resting the mouse pointer on the button for a few seconds. A label will pop up listing its function. To hide or display the tool bar, select **Toolbar** from the **View** menu.



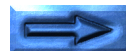
## Go to a different folder

Click the arrow button to the right of the text box and select a new folder from the list. The folder will be opened in the current window and **Nikon View 900's** menus and tool bar will disappear. To start **Nikon View 900** again in the same window, select **Nikon CoolPix900** from the pop-up list. The name of the current folder is displayed in the text box.



## Up One Level

Opens the folder one level up in the file hierarchy (in the case of the “Nikon CoolPix900” folder, the “My Computer” folder). **Nikon View 900**’s menus and tool bar will disappear. To start **Nikon View 900** again in the same window, select **Nikon CoolPix900** from the pop-up list.





### Rotate Selected

Rotates the selected images 90° to the left. This command can also be accessed by choosing **R**otate **S**electe**d** from the **E**dit menu.



### Delete Selected

Deletes the selected images. Clicking the button brings up the Confirm Image Delete dialog box, allowing you to permanently remove the selected images from the media currently being browsed. This command can also be accessed by choosing **D**ele**t**e **S**elected from the **E**dit menu.



### Print

Brings up the Print dialog box, allowing you to print selected images to a printer of your choice. This command can also be accessed by choosing **P**rint... from the **F**ile menu.



### Refresh

Updates the thumbnails in the Nikon CoolPix900 window. This command can also be accessed by choosing **R**efresh from the **V**iew menu.



### Removable storage

Displays images on a compact flash-memory card as thumbnails in the Nikon CoolPix900 window. A compact flash card-reader or PC-card adapter and PC card drive are required to use this option. This command can also be accessed by choosing **R**emovable **S**torage from the **V**iew menu.



### Images in Camera

Displays the images in the camera's memory as thumbnails in the Nikon CoolPix900 window. This command can also be accessed by choosing **I**mages in **C**amera from the **V**iew menu.

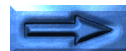


### Images on Disk

Displays the images in a selected folder as thumbnails in the Nikon CoolPix900 window. Clicking this button displays the Browse for Folder dialog, allowing you to select the folder containing the images to be browsed. This command can also be accessed by choosing **I**mages on **D**isk... from the **V**iew menu.



**Properties** Displays the Properties dialog for the selected image. This command can also be accessed by choosing **P**roperties from the **F**ile menu.





## Settings

Displays the Digital Camera Settings dialog box, where changes can be made to port settings. This command can also be accessed by choosing **Settings...** from the **View** menu.



## Thumbnail View

Displays the images as thumbnails. This command can also be accessed by choosing **Thumbnail View** from the **View** menu.



## List View

Displays the images as a simple list, without thumbnails. This command can also be accessed by choosing **List View** from the **View** menu.

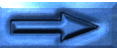
## Status Bar



The status bar shows the number of images in the Nikon CoolPix900 window and the number of images selected. When you are browsing images in the camera, the box at the right end of the status bar shows the port to which the camera is connected and the data transfer rate. When images on disk are being browsed, the box shows the current path. The status bar can be hidden or displayed by selecting **Status Bar** in the **View** menu.

## Image Windows

Double-clicking a thumbnail in the Nikon CoolPix900 window opens the image at full resolution in an image window. Any number of image windows may be open at once.



The operations that can be performed in the image window are listed below.

### Viewing images

Images are displayed at full resolution.

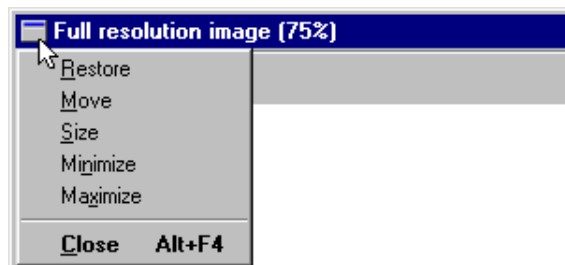
### Zoom and rotate

Using the buttons in the image window tool bar, images can be rotated or zoomed in or out.

The functions of the different parts of the image window are described in the sections that follow.

## The Title Bar

The image window gives the current zoom ratio of the image displayed. Drag the title bar to move the window to a new location, or enlarge the window to fill the screen by double-clicking the title bar. Clicking the icon at the left end of the title bar displays the standard windows control menu. The control menu allows you to perform operations on the window itself, rather than on the image it contains.



The control menu contains the items listed below.

### **Restore**

Restores the window to its original size after it has been enlarged using the **Maximize** command or reduced using the **Minimize** command.

### **Move**

Allows you to use the arrow keys or mouse to change the position of the window. When you have moved the window to the desired position, click the right mouse button or press **Enter**.

### **Size**

Allows you to use the arrow keys or mouse to change the size of the window.

### **Minimize**

Reduces the window to an icon at the bottom of the desktop.

### **Maximize**

Enlarges the window to fill the screen.

### **Close**

Closes the image window.

## **The Image Window Tool Bar**



The commands accessible from the image window tool bar are outlined below.



#### **Rotate**

Rotates the image in the image window 90° to the left.



#### **Zoom in**

Zooms in on the image in the image window.



#### **Zoom out**

Zooms the images in the image window out.

**Note:** *Operations in the image window have no effect on the thumbnails displayed in the Nikon CoolPix900 window.*